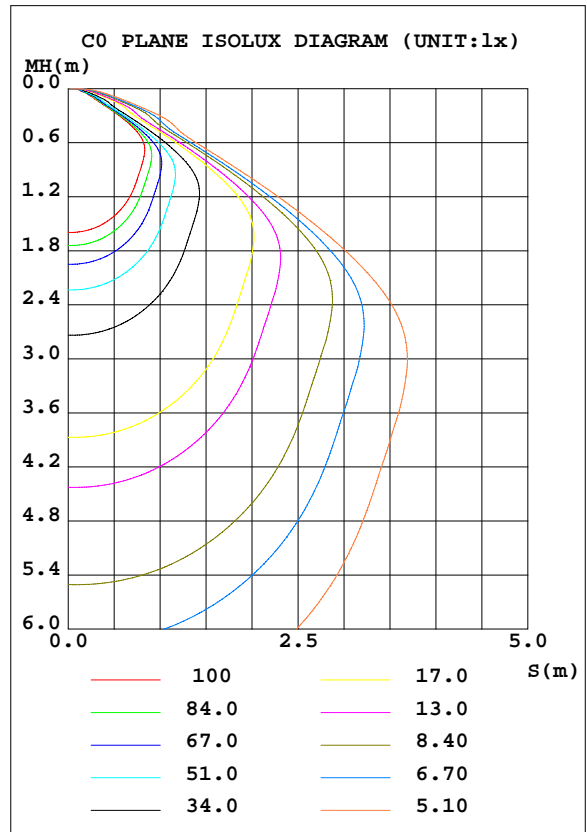
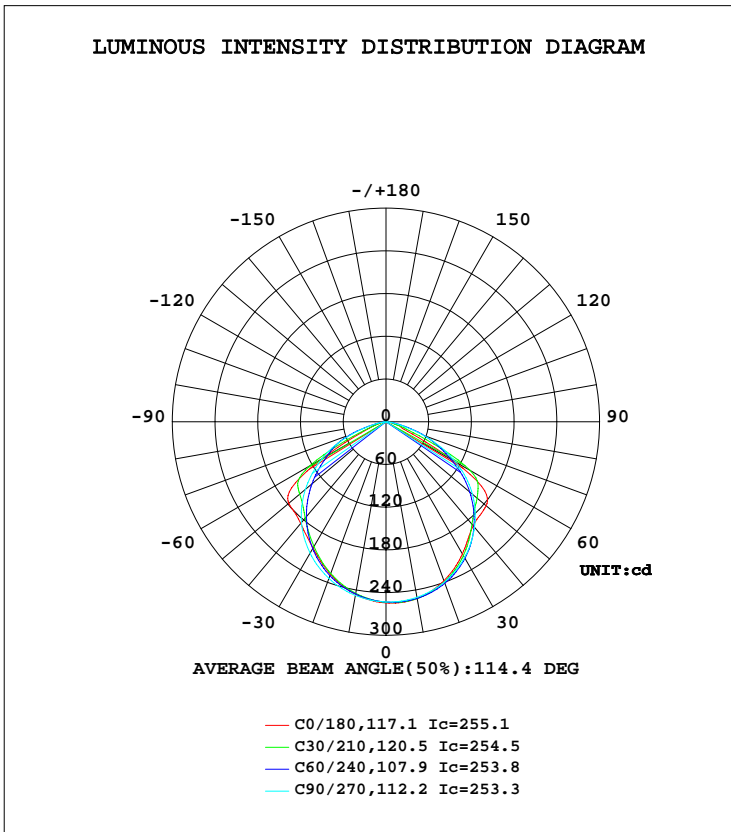


LUMINAIRE PHOTOMETRIC TEST REPORT

Test:U:119.68V I:0.0717A P:8.1124W PF:0.9456 Freq:59.98Hz Lamp Flux:674.94x1 lm		
NAME: 2835-72D-120V-4000K	TYPE:LED Strip Light	WEIGHT:
SPEC.:600MM*12MM	DIM.: 600MM*12MM	SERIAL No.:
MFR.: ESTAR	SUR.:600MM*12MM	Shielding Angle:

DATA OF LAMP		PHOTOMETRIC DATA			
MODEL	4000K	I _{max} (cd)	255.1	S/MH(C0/180)	1.21
NOMINAL POWER(W)	4	LOR(%)	100.0	S/MH(C90/270)	1.25
RATED VOLTAGE(V)	120	TOTAL FLUX(lm)	674.94	η UP, DN(C0-180)	0.0,50.8
NOMINAL FLUX(lm)	674.94	CIE CLASS	DIRECT	η UP, DN(C180-360)	0.0,49.1
LAMPS INSIDE	1	η up(%)	0.1	CIBSE SHR NOM	1.25
TEST VOLTAGE(V)	120	η down(%)	99.9	CIBSE SHR MAX	1.30



C Range: 0 - 360DEG
 C Interval: 10.0DEG
 Test Speed: HIGH
 Temperature:25.3DEG
 Operators:Q
 Test Date:2024-04-15

γ Range: 0 - 180DEG
 γ Interval: 1.0DEG
 Test System:EVERFINE GO-2000A_V1 SYSTEM V2.00.421
 Humidity:65.0%
 Test Distance:10.000m [K=1.0000]
 Remarks:

ZONAL FLUX DIAGRAM

ZONAL FLUX DIAGRAM:

γ	C0	C45	C90	C135	C180	C225	C270	C315	γ	Φ zone	Φ total	%lum, lamp
10	252.1	252.2	250.4	246.9	246.2	245.0	247.6	250.1	0- 10	23.96	23.96	3.55,3.55
20	237.7	240.6	239.7	231.1	228.1	228.2	234.3	237.2	10- 20	68.46	92.42	13.7,13.7
30	214.4	219.3	220.5	207.1	204.9	203.1	213.2	214.0	20- 30	103.3	195.7	29,29
40	190.7	188.9	193.4	178.6	186.5	173.0	184.6	182.3	30- 40	124.3	320.0	47.4,47.4
50	183.8	154.9	158.6	150.5	178.2	142.3	147.7	148.3	40- 50	132.3	452.3	67,67
60	109.4	123.6	112.8	126.9	103.6	117.0	103.9	118.0	50- 60	125.1	577.4	85.6,85.6
70	22.95	51.13	56.55	39.46	21.63	39.78	50.74	45.21	60- 70	71.32	648.7	96.1,96.1
80	7.525	10.44	10.25	6.597	6.659	6.029	8.505	8.720	70- 80	22.19	670.9	99.4,99.4
90	2.606	0.0907	0	0	0	0	0	0.2214	80- 90	3.423	674.4	99.9,99.9
100	0	0	0	0	0	0	0	0	90-100	0.0923	674.4	99.9,99.9
110	0	0	0	0.9077	0.0629	0.5390	0	0	100-110	0.0128	674.5	99.9,99.9
120	1.109	0.0008	0	0	1.374	0	0	0	110-120	0.4162	674.9	100,100
130	0	0	0	0	0	0	0	0	120-130	0.0649	674.9	100,100
140	0	0	0	0	0	0	0	0	130-140	0	674.9	100,100
150	0	0	0	0	0	0	0	0	140-150	0	674.9	100,100
160	0	0	0	0	0	0	0	0	150-160	0	674.9	100,100
170	0	0	0	0	0	0	0	0	160-170	0	674.9	100,100
180	0	0	0	0	0	0	0	0	170-180	0	674.9	100,100
DEG	LUMINOUS INTENSITY:cd									UNIT:lm		

Conical surface Flux(90deg): 385.81 lm

%lum = 57.2%

%lamp = 57.2%

Conical surface Flux(120deg): 577.42 lm

%lum = 85.6%

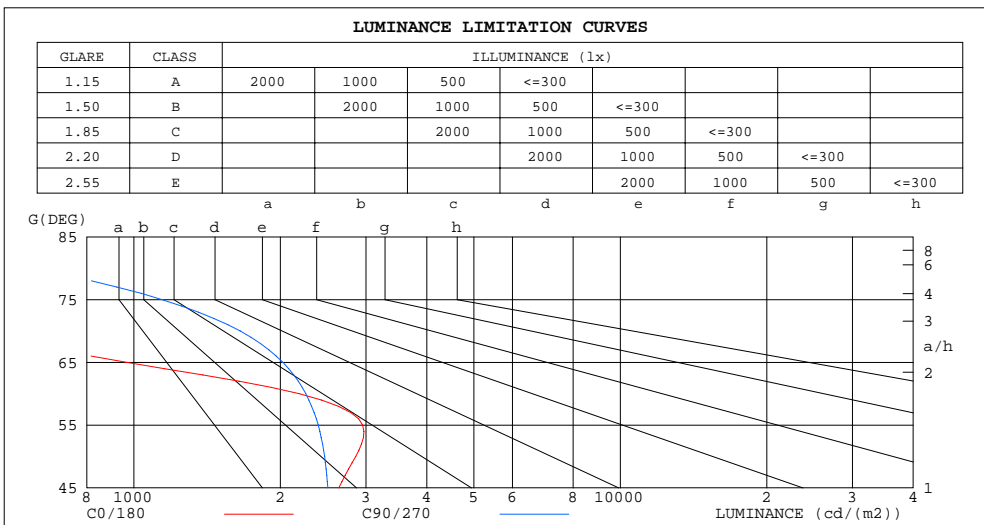
%lamp = 85.6%

C Range: 0 - 360DEG
 C Interval: 10.0DEG
 Test Speed: HIGH
 Temperature:25.3DEG
 Operators:Q
 Test Date:2024-04-15

γ Range: 0 - 180DEG
 γ Interval: 1.0DEG
 Test System:EVERFINE GO-2000A_V1 SYSTEM V2.00.421
 Humidity:65.0%
 Test Distance:10.000m [K=1.0000]
 Remarks:

LUMINANCE LIMITATION CURVES

Test:U:119.68V I:0.0717A P:8.1124W PF:0.9456 Freq:59.98Hz Lamp Flux:674.94x1 lm		
NAME: 2835-72D-120V-4000K	TYPE:LED Strip Light	WEIGHT:
SPEC.:600MM*12MM	DIM.: 600MM*12MM	SERIAL No.:
MFR.: ESTAR	SUR.:600MM*12MM	Shielding Angle:



LUMINANCE cd/(m2)		
G(DEG)	C0/180	C90/270
85	619	0
80	433	590
75	560	1141
70	671	1654
65	966	2025
60	2187	2256
55	2952	2393
50	2859	2467
45	2638	2505

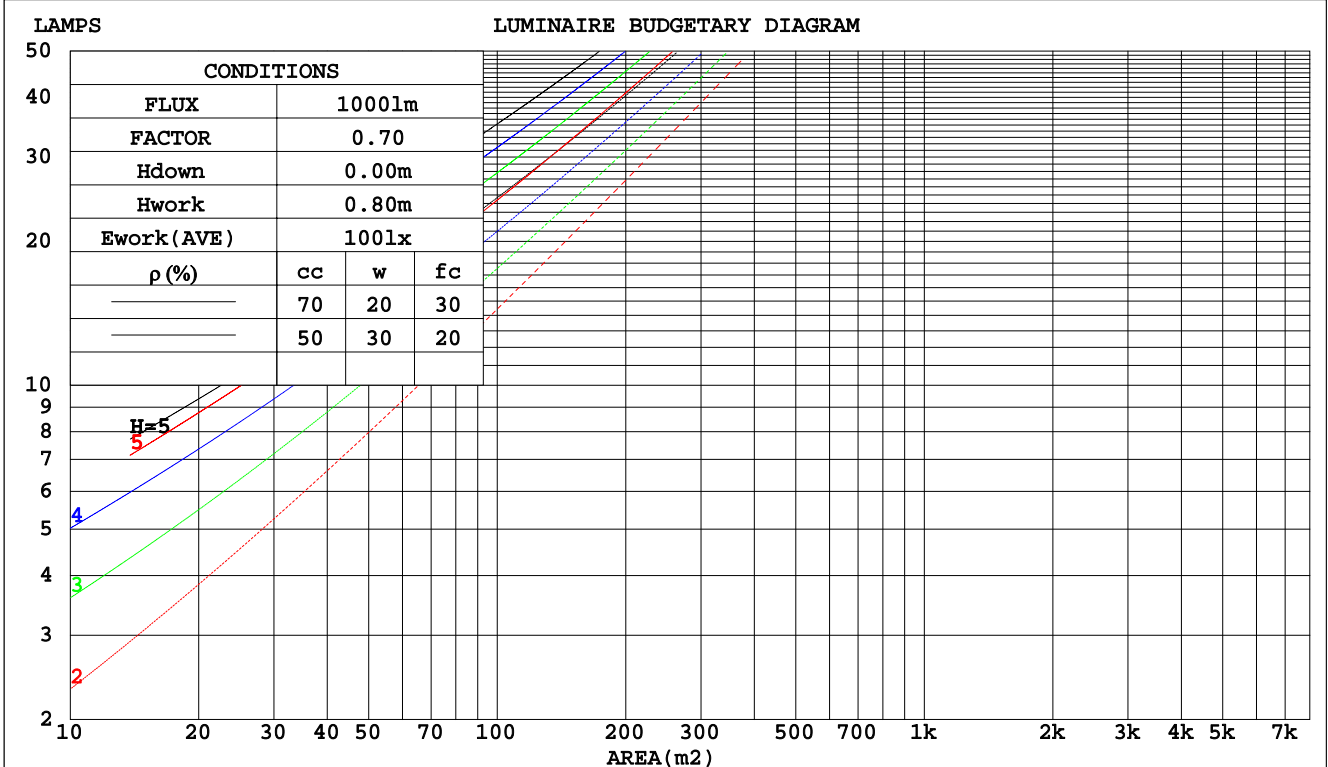
C Range: 0 - 360DEG
 C Interval: 10.0DEG
 Test Speed: HIGH
 Temperature:25.3DEG
 Operators:Q
 Test Date:2024-04-15

γ Range: 0 - 180DEG
 γ Interval: 1.0DEG
 Test System:EVERFINE GO-2000A_V1 SYSTEM V2.00.421
 Humidity:65.0%
 Test Distance:10.000m [K=1.0000]
 Remarks:

CU AND LUMINAIRE BUDGETARY ESTIMATE DIAGRAM

Test:U:119.68V I:0.0717A P:8.1124W PF:0.9456 Freq:59.98Hz Lamp Flux:674.94x1 lm		
NAME: 2835-72D-120V-4000K	TYPE:LED Strip Light	WEIGHT:
SPEC.:600MM*12MM	DIM.: 600MM*12MM	SERIAL No.:
MFR.: ESTAR	SUR.:600MM*12MM	Shielding Angle:

pcc	80%			70%			50%			30%			10%			0
	50%	30%	10%	50%	30%	10%	50%	30%	10%	50%	30%	10%	50%	30%	10%	0
pw																
pfc	20%			20%			20%			20%			20%			0
RCR	RCR:Room Cavity Ratio Coefficients of Utilization(CU)															
0.0	1.19	1.19	1.19	1.16	1.16	1.16	1.11	1.11	1.11	1.06	1.06	1.06	1.02	1.02	1.02	.00
1.0	1.06	1.02	.98	1.03	.00	.97	.99	.96	.94	.95	.93	.91	.92	.90	.88	.86
2.0	.93	.87	.81	.91	.85	.80	.88	.83	.79	.84	.80	.77	.81	.78	.75	.73
3.0	.82	.74	.68	.80	.73	.68	.78	.71	.66	.75	.70	.65	.72	.68	.64	.62
4.0	.73	.64	.58	.71	.64	.58	.69	.62	.57	.67	.61	.56	.65	.59	.55	.53
5.0	.65	.56	.50	.64	.56	.50	.62	.55	.49	.60	.54	.49	.58	.53	.48	.46
6.0	.59	.50	.44	.58	.49	.43	.56	.48	.43	.54	.48	.43	.53	.47	.42	.40
7.0	.53	.44	.38	.52	.44	.38	.51	.43	.38	.49	.43	.38	.48	.42	.37	.36
8.0	.48	.40	.34	.48	.40	.34	.46	.39	.34	.45	.39	.34	.44	.38	.34	.32
9.0	.44	.36	.31	.44	.36	.31	.43	.36	.31	.42	.35	.30	.41	.35	.30	.28
10.0	.41	.33	.28	.40	.33	.28	.39	.32	.28	.38	.32	.28	.38	.32	.27	.26



C Range: 0 - 360DEG
 C Interval: 10.0DEG
 Test Speed: HIGH
 Temperature: 25.3DEG
 Operators: Q
 Test Date: 2024-04-15

γ Range: 0 - 180DEG
 γ Interval: 1.0DEG
 Test System: EVERFINE GO-2000A_V1 SYSTEM V2.00.421
 Humidity: 65.0%
 Test Distance: 10.000m [K=1.0000]
 Remarks:

WEC AND CCEC

Test:U:119.68V I:0.0717A P:8.1124W PF:0.9456 Freq:59.98Hz Lamp Flux:674.94x1 lm		
NAME: 2835-72D-120V-4000K	TYPE:LED Strip Light	WEIGHT:
SPEC.:600MM*12MM	DIM.: 600MM*12MM	SERIAL No.:
MFR.: ESTAR	SUR.:600MM*12MM	Shielding Angle:

ρcc	80%			70%			50%			30%			10%			0
ρw	50%	30%	10%	50%	30%	10%	50%	30%	10%	50%	30%	10%	50%	30%	10%	0
ρfc	20%			20%			20%			20%			20%			0
RCR	RCR:Room Cavity Ratio						Wall Exitance Coefficients(WEC)									
0.0																
1.0	.275	.156	.049	.268	.153	.049	.255	.146	.047	.243	.140	.045	.231	.134	.043	
2.0	.267	.147	.045	.261	.144	.044	.250	.139	.043	.239	.134	.042	.229	.130	.041	
3.0	.253	.135	.040	.247	.133	.040	.237	.129	.039	.228	.125	.038	.219	.121	.038	
4.0	.237	.123	.036	.232	.121	.036	.223	.118	.035	.215	.115	.035	.207	.112	.034	
5.0	.221	.113	.033	.217	.111	.032	.209	.109	.032	.201	.106	.032	.194	.104	.031	
6.0	.207	.104	.030	.203	.103	.030	.196	.100	.029	.189	.098	.029	.183	.096	.029	
7.0	.194	.096	.027	.190	.095	.027	.184	.093	.027	.178	.091	.027	.172	.089	.026	
8.0	.182	.089	.025	.179	.088	.025	.173	.086	.025	.167	.085	.024	.162	.083	.024	
9.0	.171	.083	.023	.168	.082	.023	.163	.080	.023	.158	.079	.023	.153	.078	.023	
10.0	.161	.077	.021	.158	.077	.021	.154	.075	.021	.149	.074	.021	.145	.073	.021	

ρcc	80%			70%			50%			30%			10%			0
ρw	50%	30%	10%	50%	30%	10%	50%	30%	10%	50%	30%	10%	50%	30%	10%	0
ρfc	20%			20%			20%			20%			20%			0
RCR	RCR:Room Cavity Ratio						Ceiling Cavity Exitance Coefficients(CCEC)									
0.0	.191	.191	.191	.163	.163	.163	.111	.111	.111	.064	.064	.064	.020	.020	.020	
1.0	.179	.157	.138	.153	.135	.119	.104	.093	.082	.060	.054	.048	.019	.017	.015	
2.0	.170	.133	.102	.145	.114	.088	.100	.079	.061	.057	.046	.036	.018	.015	.012	
3.0	.162	.115	.077	.139	.099	.067	.095	.069	.047	.055	.040	.028	.018	.013	.009	
4.0	.154	.101	.061	.133	.088	.053	.091	.061	.037	.053	.036	.022	.017	.012	.007	
5.0	.147	.091	.049	.127	.079	.043	.087	.055	.030	.051	.032	.018	.016	.011	.006	
6.0	.141	.083	.041	.121	.071	.036	.083	.050	.025	.048	.029	.015	.016	.010	.005	
7.0	.134	.076	.035	.115	.066	.030	.080	.046	.021	.046	.027	.013	.015	.009	.004	
8.0	.128	.070	.030	.110	.061	.026	.076	.043	.019	.044	.025	.011	.014	.008	.004	
9.0	.122	.065	.026	.105	.056	.023	.073	.040	.016	.042	.023	.010	.014	.008	.003	
10.0	.117	.061	.023	.100	.053	.020	.070	.037	.015	.041	.022	.009	.013	.007	.003	

C Range: 0 - 360DEG
 C Interval: 10.0DEG
 Test Speed: HIGH
 Temperature:25.3DEG
 Operators:Q
 Test Date:2024-04-15

γ Range: 0 - 180DEG
 γ Interval: 1.0DEG
 Test System:EVERFINE GO-2000A_V1 SYSTEM V2.00.421
 Humidity:65.0%
 Test Distance:10.000m [K=1.0000]
 Remarks:

UGR(Unified Glare Rating) Table

Test:U:119.68V I:0.0717A P:8.1124W PF:0.9456 Freq:59.98Hz Lamp Flux:674.94x1 lm		
NAME: 2835-72D-120V-4000K	TYPE:LED Strip Light	WEIGHT:
SPEC.:600MM*12MM	DIM.: 600MM*12MM	SERIAL No.:
MFR.: ESTAR	SUR.:600MM*12MM	Shielding Angle:

ceiling/cavity	0.7	0.7	0.5	0.5	0.3	0.7	0.7	0.5	0.5	0.3
walls	0.5	0.3	0.5	0.3	0.3	0.5	0.3	0.5	0.3	0.3
working plane	0.2	0.2	0.2	0.2	0.2	0.2	0.2	0.2	0.2	0.2
Room dimensions	Viewed crosswise					Viewed endwise				
x = 2H y = 2H	18.0	19.4	18.2	19.6	19.9	17.4	18.9	17.7	19.1	19.3
3H	18.0	19.4	18.3	19.6	19.9	18.5	19.8	18.8	20.1	20.3
4H	18.0	19.3	18.4	19.6	19.8	18.7	20.0	19.0	20.3	20.5
6H	18.0	19.2	18.3	19.5	19.7	18.8	20.0	19.1	20.2	20.5
8H	18.0	19.1	18.3	19.4	19.7	18.7	19.9	19.1	20.2	20.5
12H	18.0	19.1	18.3	19.4	19.7	18.7	19.8	19.0	20.1	20.4
4H 2H	18.4	19.7	18.8	20.0	20.2	18.1	19.3	18.4	19.6	19.8
3H	18.6	19.7	19.0	20.0	20.3	19.2	20.3	19.6	20.6	20.9
4H	18.6	19.6	19.0	19.9	20.3	19.5	20.5	19.9	20.9	21.2
6H	18.6	19.5	19.0	19.8	20.2	19.6	20.5	20.0	20.9	21.2
8H	18.6	19.4	19.0	19.8	20.2	19.6	20.4	20.0	20.8	21.2
12H	18.6	19.4	19.0	19.8	20.2	19.6	20.3	20.0	20.7	21.1
8H 4H	18.7	19.5	19.1	19.9	20.2	19.5	20.3	19.9	20.7	21.1
6H	18.7	19.4	19.1	19.8	20.2	19.7	20.4	20.1	20.8	21.2
8H	18.7	19.3	19.2	19.8	20.2	19.7	20.3	20.1	20.7	21.2
12H	18.8	19.3	19.3	19.7	20.2	19.7	20.2	20.1	20.6	21.1
12H 4H	18.6	19.4	19.1	19.8	20.2	19.5	20.2	19.9	20.6	21.0
6H	18.7	19.3	19.2	19.7	20.2	19.7	20.2	20.1	20.7	21.1
8H	18.7	19.3	19.2	19.7	20.2	19.7	20.2	20.1	20.6	21.1
Variations with the observer position at spacings:										
S = 1.0H	+ 0.2 / - 0.4					+ 0.3 / - 0.4				
1.5H	+ 1.2 / - 1.7					+ 0.4 / - 0.5				
2.0H	+ 1.1 / - 1.5					+ 0.4 / - 0.6				

CIE Pub.117, 674.9 lm Total Lamp Luminous Flux Correct (8log(F/F0) = -1.4)
 Area: 0.1 m2

C Range: 0 - 360DEG
 C Interval: 10.0DEG
 Test Speed: HIGH
 Temperature:25.3DEG
 Operators:Q
 Test Date:2024-04-15

γ Range: 0 - 180DEG
 γ Interval: 1.0DEG
 Test System:EVERFINE GO-2000A_V1 SYSTEM V2.00.421
 Humidity:65.0%
 Test Distance:10.000m [K=1.0000]
 Remarks:

UTILIZATION FACTORS TABLE

Test:U:119.68V I:0.0717A P:8.1124W PF:0.9456 Freq:59.98Hz Lamp Flux:674.94x1 lm		
NAME: 2835-72D-120V-4000K	TYPE:LED Strip Light	WEIGHT:
SPEC.:600MM*12MM	DIM.: 600MM*12MM	SERIAL No.:
MFR.: ESTAR	SUR.:600MM*12MM	Shielding Angle:

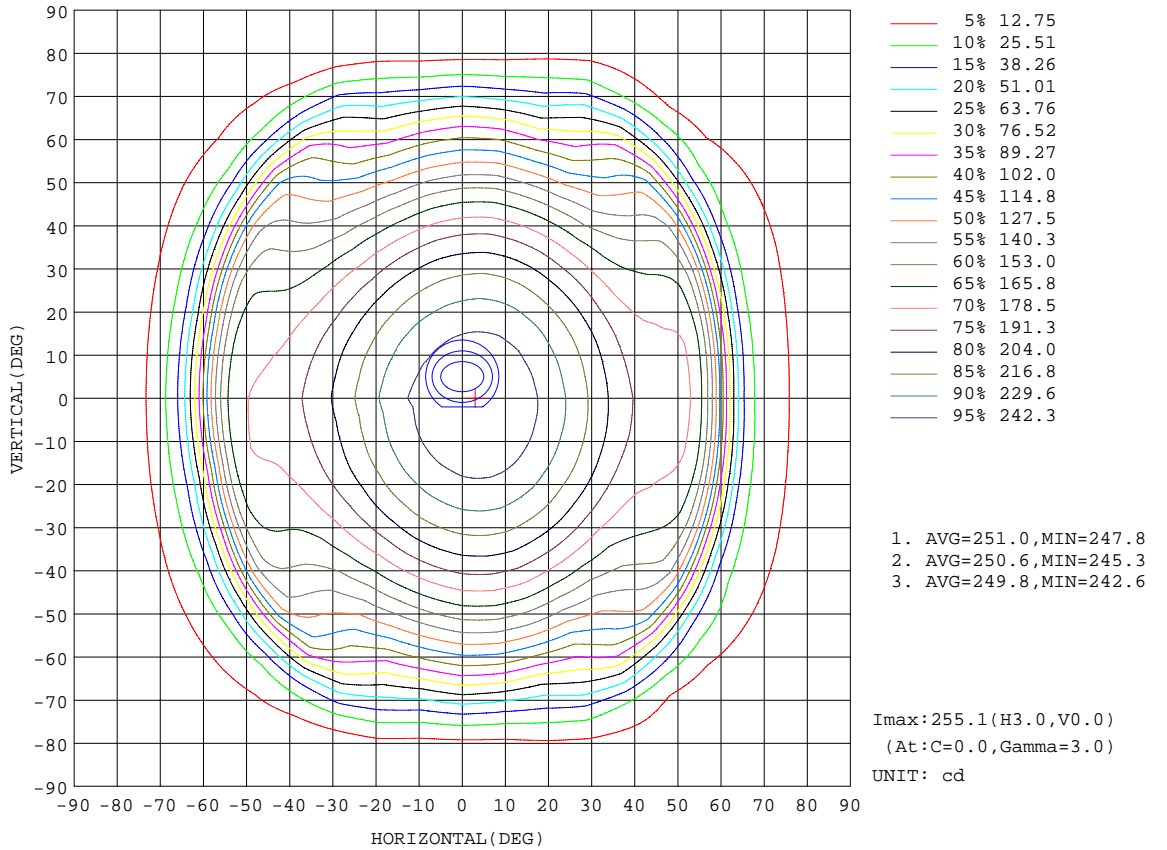
REFLECTANCE										
Ceiling	0.8	0.8	0.8	0.7	0.7	0.7	0.5	0.5	0.5	0
Walls	0.7	0.5	0.3	0.7	0.5	0.3	0.7	0.5	0.3	0
Working plane	0.2	0.2	0.2	0.2	0.2	0.2	0.2	0.2	0.2	0
ROOM INDEX	UTILIZATION FACTORS(PERCENT) $k(RI) \times RCR = 5$									
k = 0.60	58	47	40	58	47	40	56	46	40	33
0.80	69	58	51	68	57	50	66	57	50	43
1.00	78	68	61	77	67	60	75	68	60	53
1.25	85	76	69	84	75	68	81	73	68	61
1.50	90	81	75	89	80	74	86	79	73	66
2.00	97	89	84	95	88	83	92	86	81	74
2.50	101	94	88	99	92	87	95	90	85	78
3.00	104	98	93	102	96	92	98	93	90	81
4.00	108	103	98	105	101	97	101	97	94	86
5.00	110	105	102	107	104	100	103	100	97	88
ROOM INDEX	UF(total)									Direct
According to DIN EN 13032-2 2004			Suspended				SHRNOM = 1.25			

C Range: 0 - 360DEG
C Interval: 10.0DEG
Test Speed: HIGH
Temperature:25.3DEG
Operators:Q
Test Date:2024-04-15

γ Range: 0 - 180DEG
 γ Interval: 1.0DEG
Test System:EVERFINE GO-2000A_V1 SYSTEM V2.00.421
Humidity:65.0%
Test Distance:10.000m [K=1.0000]
Remarks:

ISOCANDELA DIAGRAM

Test:U:119.68V I:0.0717A P:8.1124W PF:0.9456 Freq:59.98Hz Lamp Flux:674.94x1 lm		
NAME: 2835-72D-120V-4000K	TYPE:LED Strip Light	WEIGHT:
SPEC.:600MM*12MM	DIM.: 600MM*12MM	SERIAL No.:
MFR.: ESTAR	SUR.:600MM*12MM	Shielding Angle:

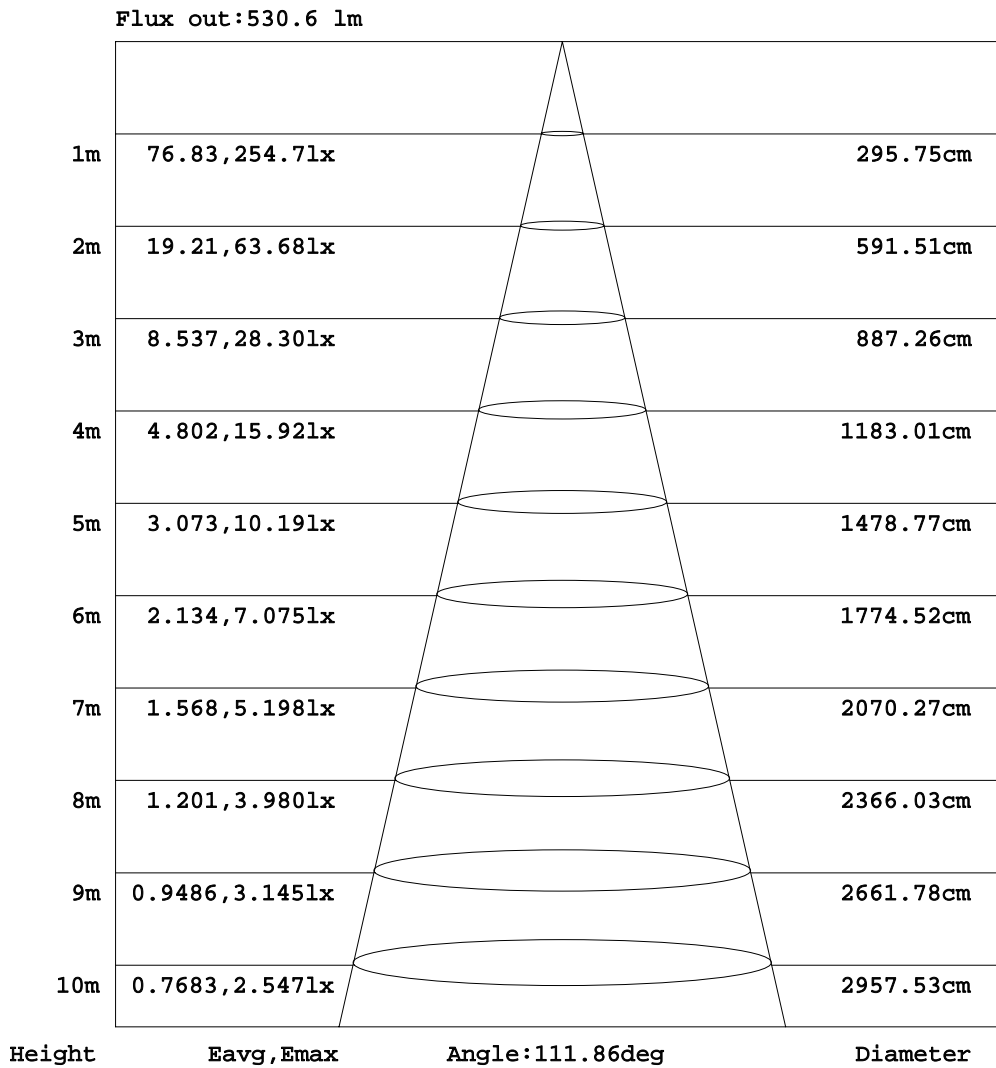


C Range: 0 - 360DEG
 C Interval: 10.0DEG
 Test Speed: HIGH
 Temperature: 25.3DEG
 Operators: Q
 Test Date: 2024-04-15

γ Range: 0 - 180DEG
 γ Interval: 1.0DEG
 Test System: EVERFINE GO-2000A_V1 SYSTEM V2.00.421
 Humidity: 65.0%
 Test Distance: 10.000m [K=1.0000]
 Remarks:

AAI Figure

Test:U:119.68V I:0.0717A P:8.1124W PF:0.9456 Freq:59.98Hz Lamp Flux:674.94x1 lm		
NAME: 2835-72D-120V-4000K	TYPE:LED Strip Light	WEIGHT:
SPEC.:600MM*12MM	DIM.: 600MM*12MM	SERIAL No.:
MFR.: ESTAR	SUR.:600MM*12MM	Shielding Angle:



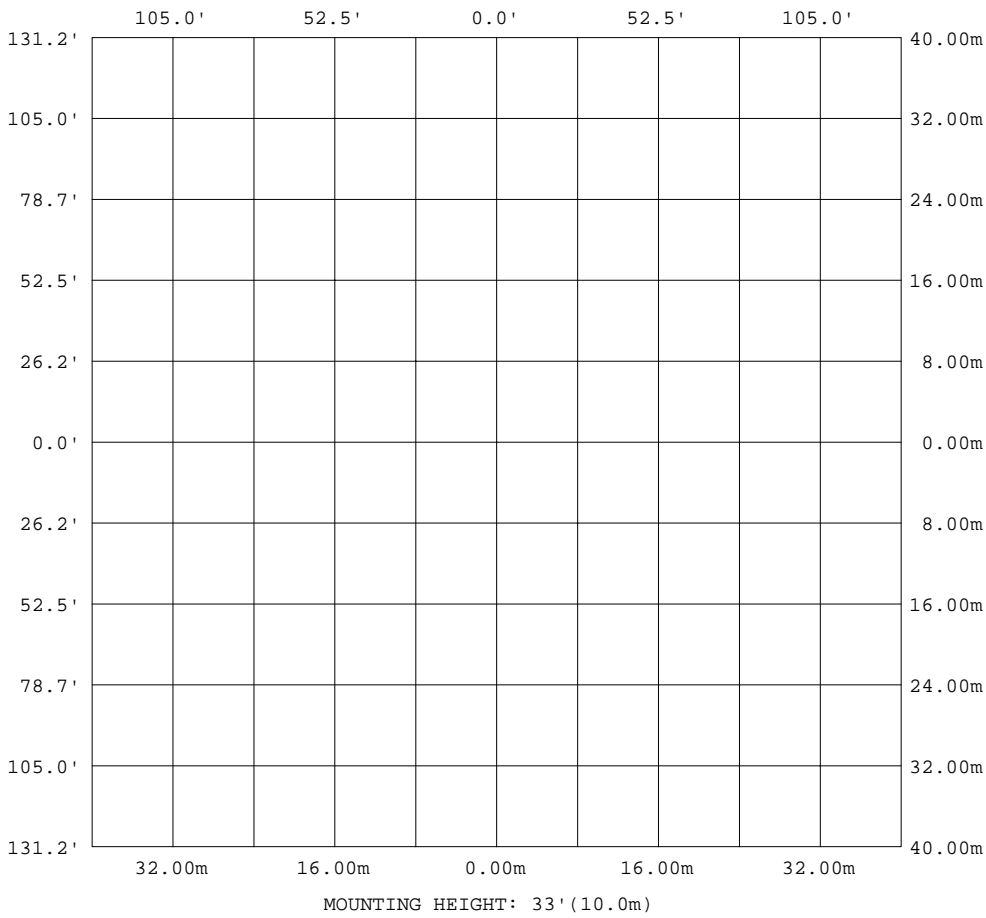
Note:The Curves indicate the illuminated area and the average illumination when the luminaire is at different distance.

C Range: 0 - 360DEG
 C Interval: 10.0DEG
 Test Speed: HIGH
 Temperature:25.3DEG
 Operators:Q
 Test Date:2024-04-15

γ Range: 0 - 180DEG
 γ Interval: 1.0DEG
 Test System:EVERFINE GO-2000A_V1 SYSTEM V2.00.421
 Humidity:65.0%
 Test Distance:10.000m [K=1.0000]
 Remarks:

ISOLUX DIAGRAM

Test:U:119.68V I:0.0717A P:8.1124W PF:0.9456 Freq:59.98Hz Lamp Flux:674.94x1 lm		
NAME: 2835-72D-120V-4000K	TYPE:LED Strip Light	WEIGHT:
SPEC.:600MM*12MM	DIM.: 600MM*12MM	SERIAL No.:
MFR.: ESTAR	SUR.:600MM*12MM	Shielding Angle:



C Range: 0 - 360DEG
 C Interval: 10.0DEG
 Test Speed: HIGH
 Temperature:25.3DEG
 Operators:Q
 Test Date:2024-04-15

γ Range: 0 - 180DEG
 γ Interval: 1.0DEG
 Test System:EVERFINE GO-2000A_V1 SYSTEM V2.00.421
 Humidity:65.0%
 Test Distance:10.000m [K=1.0000]
 Remarks:

LED Avg.L Report

Test:U:119.68V I:0.0717A P:8.1124W PF:0.9456 Freq:59.98Hz Lamp Flux:674.94x1 lm		
NAME: 2835-72D-120V-4000K	TYPE:LED Strip Light	WEIGHT:
SPEC.:600MM*12MM	DIM.: 600MM*12MM	SERIAL No.:
MFR.: ESTAR	SUR.:600MM*12MM	Shielding Angle:

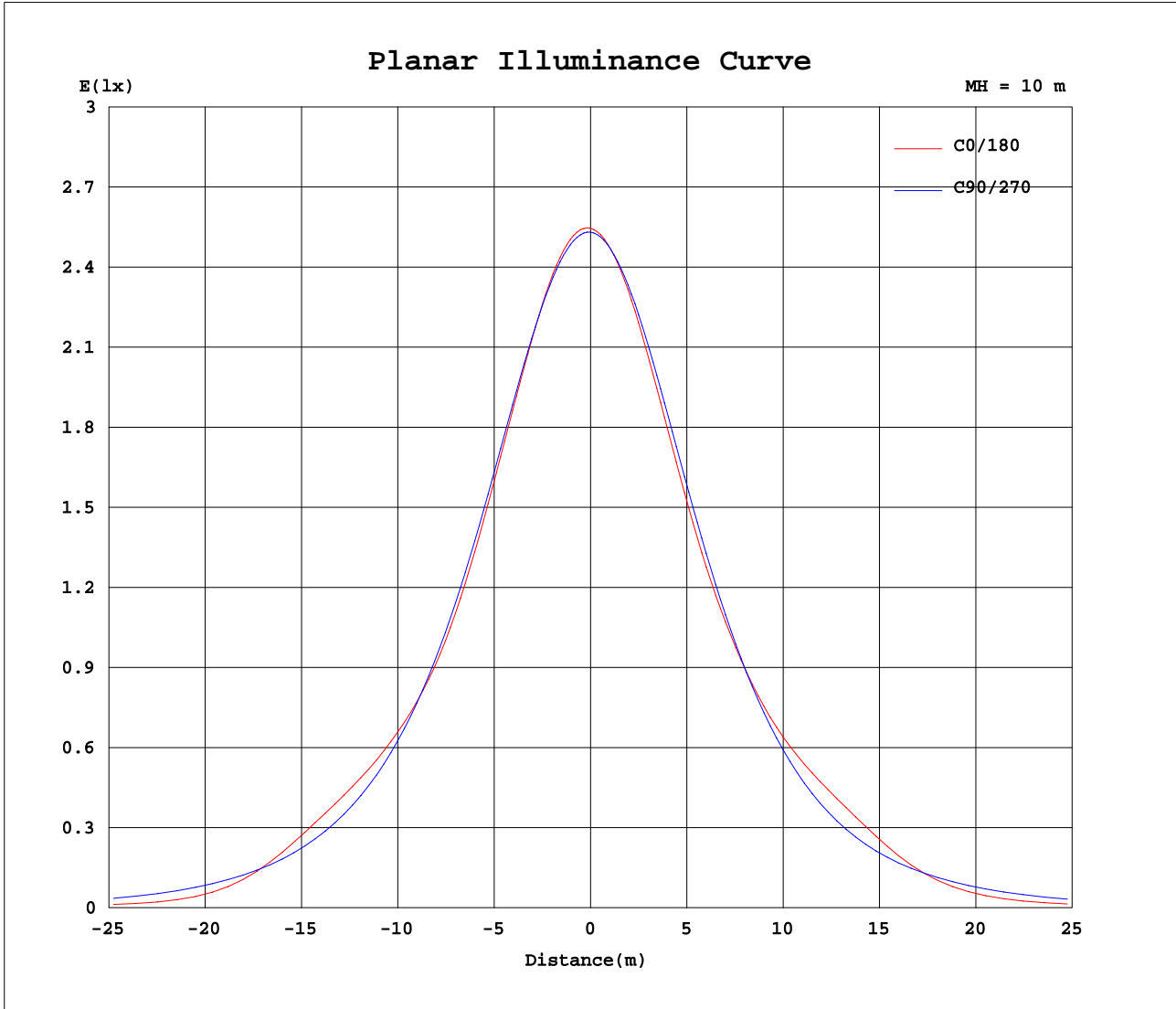
AvgL	cd/m2
L_0~180(65)av	1021
L_0~180(75)av	468
L_0~180(85)av	488
L_90~270(65)av	1949
L_90~270(75)av	1068
L_90~270(85)av	0
L_45(65)av	2138
L_45(75)av	679
L_45(85)av	237

Standard: GB/T 29293-2012

C Range: 0 - 360DEG
 C Interval: 10.0DEG
 Test Speed: HIGH
 Temperature:25.3DEG
 Operators:Q
 Test Date:2024-04-15

γ Range: 0 - 180DEG
 γ Interval: 1.0DEG
 Test System:EVERFINE GO-2000A_V1 SYSTEM V2.00.421
 Humidity:65.0%
 Test Distance:10.000m [K=1.0000]
 Remarks:

Planar Illuminance Curve



C Range: 0 - 360DEG
C Interval: 10.0DEG
Test Speed: HIGH
Temperature: 25.3DEG
Operators: Q
Test Date: 2024-04-15

γ Range: 0 - 180DEG
 γ Interval: 1.0DEG
Test System: EVERFINE GO-2000A_V1 SYSTEM V2.00.421
Humidity: 65.0%
Test Distance: 10.000m [K=1.0000]
Remarks:

LUMINOUS DISTRIBUTION INTENSITY DATA

Test:U:119.68V I:0.0717A P:8.1124W PF:0.9456 Freq:59.98Hz Lamp Flux:674.94x1 lm		
NAME: 2835-72D-120V-4000K	TYPE:LED Strip Light	WEIGHT:
SPEC.:600MM*12MM	DIM.: 600MM*12MM	SERIAL No.:
MFR.: ESTAR	SUR.:600MM*12MM	Shielding Angle:

Table--1

UNIT: cd

C(DEG) γ (DEG)	0	10	20	30	40	50	60	70	80	90	100	110	120	130	140	150	160	170	180	
0	255	254	254	254	253	254	253	253	253	253	253	253	253	253	253	253	253	253	253	255
5	255	255	255	254	254	254	254	253	253	253	252	252	252	251	251	251	250	250	250	252
10	252	252	252	252	252	252	252	252	251	250	250	249	248	247	247	246	245	245	245	246
15	246	247	247	247	248	248	248	248	247	246	245	243	242	241	239	238	237	237	238	
20	238	238	239	239	240	241	241	241	241	240	238	236	234	232	230	229	227	227	228	
25	227	228	228	229	230	232	233	233	232	231	229	226	224	221	219	217	216	215	217	
30	214	215	216	217	218	220	222	223	222	220	218	215	211	208	206	205	204	203	205	
35	201	202	202	203	204	206	208	210	210	208	205	201	197	194	192	193	193	194	195	
40	191	190	189	188	188	190	192	195	195	193	189	185	180	179	179	181	183	185	187	
45	187	185	181	176	172	172	174	178	179	177	172	167	163	162	165	171	177	181	181	
50	184	182	176	167	157	152	154	158	160	159	153	147	144	146	155	166	174	179	178	
55	169	170	167	158	144	133	131	135	139	137	131	126	124	133	147	159	162	160	162	
60	109	116	126	136	131	116	105	109	113	113	107	101	105	122	132	125	107	96.9	104	
65	40.8	45.5	55.0	74.6	93.0	95.4	81.6	78.8	84.5	85.6	79.0	76.6	87.2	95.6	78.7	59.8	46.6	41.7	45.5	
70	23.0	23.6	24.7	30.5	43.3	58.9	58.1	51.4	54.2	56.6	51.2	52.9	57.9	47.7	31.2	23.1	20.6	20.7	21.6	
75	14.5	14.7	13.6	12.9	15.4	25.1	31.9	29.5	28.3	29.5	27.0	30.1	27.9	20.2	14.3	12.5	10.4	9.57	9.71	
80	7.53	7.76	8.13	8.60	9.31	11.6	13.8	12.8	10.5	10.3	9.79	11.3	9.06	6.64	6.56	6.68	6.47	6.41	6.66	
85	5.40	5.64	5.90	5.99	4.64	3.28	2.78	1.55	0.02	0.00	0.01	0.49	0.34	0.39	0.78	1.56	2.23	2.58	3.11	
90	2.61	2.63	2.20	1.41	0.18	0.00	0.00	0.00	0.00	0.00	0.00	0.00	0.00	0.00	0.00	0.00	0.00	0.00	0.00	
95	0.00	0.00	0.00	0.00	0.00	0.00	0.00	0.00	0.00	0.00	0.00	0.00	0.00	0.00	0.00	0.00	0.00	0.00	0.00	
100	0.00	0.00	0.00	0.00	0.00	0.00	0.00	0.00	0.00	0.00	0.00	0.00	0.00	0.00	0.00	0.00	0.00	0.00	0.00	
105	0.00	0.00	0.00	0.00	0.00	0.00	0.00	0.00	0.00	0.00	0.00	0.00	0.00	0.00	0.00	0.00	0.00	0.00	0.00	
110	0.00	0.00	0.00	0.00	0.00	0.00	0.00	0.00	0.00	0.00	0.00	0.00	0.00	0.75	1.06	0.69	0.34	0.00	0.06	
115	0.00	0.00	0.00	0.00	0.03	0.00	0.00	0.00	0.00	0.00	0.00	0.00	0.00	0.01	1.35	2.22	2.52	2.38	2.49	
120	1.11	1.13	0.00	0.19	0.00	0.00	0.00	0.00	0.00	0.00	0.00	0.00	0.00	0.00	0.00	0.10	0.69	1.23	1.37	
125	0.67	0.57	0.00	0.00	0.00	0.00	0.00	0.00	0.00	0.00	0.00	0.00	0.00	0.00	0.00	0.00	0.00	0.00	0.00	
130	0.00	0.00	0.00	0.00	0.00	0.00	0.00	0.00	0.00	0.00	0.00	0.00	0.00	0.00	0.00	0.00	0.00	0.00	0.00	
135	0.00	0.00	0.00	0.00	0.00	0.00	0.00	0.00	0.00	0.00	0.00	0.00	0.00	0.00	0.00	0.00	0.00	0.00	0.00	
140	0.00	0.00	0.00	0.00	0.00	0.00	0.00	0.00	0.00	0.00	0.00	0.00	0.00	0.00	0.00	0.00	0.00	0.00	0.00	
145	0.00	0.00	0.00	0.00	0.00	0.00	0.00	0.00	0.00	0.00	0.00	0.00	0.00	0.00	0.00	0.00	0.00	0.00	0.00	
150	0.00	0.00	0.00	0.00	0.00	0.00	0.00	0.00	0.00	0.00	0.00	0.00	0.00	0.00	0.00	0.00	0.00	0.00	0.00	
155	0.00	0.00	0.00	0.00	0.00	0.00	0.00	0.00	0.00	0.00	0.00	0.00	0.00	0.00	0.00	0.00	0.00	0.00	0.00	
160	0.00	0.00	0.00	0.00	0.00	0.00	0.00	0.00	0.00	0.00	0.00	0.00	0.00	0.00	0.00	0.00	0.00	0.00	0.00	
165	0.00	0.00	0.00	0.00	0.00	0.00	0.00	0.00	0.00	0.00	0.00	0.00	0.00	0.00	0.00	0.00	0.00	0.00	0.00	
170	0.00	0.00	0.00	0.00	0.00	0.00	0.00	0.00	0.00	0.00	0.00	0.00	0.00	0.00	0.00	0.00	0.00	0.00	0.00	
175	0.00	0.00	0.00	0.00	0.00	0.00	0.00	0.00	0.00	0.00	0.00	0.00	0.00	0.00	0.00	0.00	0.00	0.00	0.00	
180	0.00	0.00	0.00	0.00	0.00	0.00	0.00	0.00	0.00	0.00	0.00	0.00	0.00	0.00	0.00	0.00	0.00	0.00	0.00	

C Range: 0 - 360DEG
 C Interval: 10.0DEG
 Test Speed: HIGH
 Temperature:25.3DEG
 Operators:Q
 Test Date:2024-04-15

γ Range: 0 - 180DEG
 γ Interval: 1.0DEG
 Test System:EVERFINE GO-2000A_V1 SYSTEM V2.00.421
 Humidity:65.0%
 Test Distance:10.000m [K=1.0000]
 Remarks:

LUMINOUS DISTRIBUTION INTENSITY DATA

Test:U:119.68V I:0.0717A P:8.1124W PF:0.9456 Freq:59.98Hz Lamp Flux:674.94x1 lm		
NAME: 2835-72D-120V-4000K	TYPE:LED Strip Light	WEIGHT:
SPEC.:600MM*12MM	DIM.: 600MM*12MM	SERIAL No.:
MFR.: ESTAR	SUR.:600MM*12MM	Shielding Angle:

Table--2

UNIT: cd

C(DEG) γ (DEG)	190	200	210	220	230	240	250	260	270	280	290	300	310	320	330	340	350			
0	254	254	254	253	254	253	253	253	253	253	253	253	253	253	253	253	253			
5	251	251	250	250	250	251	251	251	251	252	252	252	253	253	253	254	254			
10	245	245	245	245	245	246	246	247	248	248	249	249	250	250	251	251	251			
15	237	237	237	237	238	239	240	241	242	243	244	244	245	245	245	245	246			
20	227	227	227	228	229	230	231	233	234	236	237	237	237	237	237	237	237			
25	215	215	215	216	217	219	221	223	225	226	227	227	227	227	226	226	226			
30	203	203	202	203	204	206	208	211	213	215	216	215	214	214	214	214	214			
35	193	192	189	188	188	191	194	197	200	202	202	201	199	199	199	199	200			
40	184	181	177	174	172	174	177	182	185	186	186	184	182	182	183	186	189			
45	178	173	166	159	155	156	159	164	167	169	167	165	164	166	171	178	183			
50	175	169	158	147	138	136	138	144	148	149	146	144	144	152	163	174	182			
55	160	159	151	137	122	115	116	122	126	127	123	120	126	140	155	166	171			
60	103	113	123	124	110	94.9	92.6	99.5	104	104	97.4	97.2	109	127	132	126	116			
65	44.7	50.2	61.0	80.2	88.3	77.7	69.0	74.2	79.1	77.0	70.6	76.9	89.7	86.7	67.6	53.2	44.2			
70	20.6	20.5	22.9	32.7	46.8	53.7	46.1	47.3	50.7	48.2	46.0	54.8	52.3	38.1	26.3	22.3	22.0			
75	9.58	10.6	11.7	14.2	19.7	26.8	25.7	24.2	25.7	24.8	26.1	29.0	20.9	13.3	11.4	13.1	14.7			
80	6.42	6.40	6.37	6.08	5.98	8.78	9.47	8.37	8.51	9.13	11.0	12.2	9.51	7.93	7.48	7.57	7.61			
85	2.69	2.26	1.21	0.60	0.02	0.22	0.01	0.00	0.00	0.00	0.00	1.19	2.38	2.64	4.59	5.73	5.63	5.27		
90	0.00	0.00	0.00	0.00	0.00	0.00	0.00	0.00	0.00	0.00	0.00	0.00	0.00	0.44	1.70	2.48	2.65			
95	0.00	0.00	0.00	0.00	0.00	0.00	0.00	0.00	0.00	0.00	0.00	0.00	0.00	0.00	0.00	0.00	0.00			
100	0.00	0.00	0.00	0.00	0.00	0.00	0.00	0.00	0.00	0.00	0.00	0.00	0.00	0.00	0.00	0.00	0.00			
105	0.00	0.00	0.00	0.00	0.00	0.00	0.00	0.00	0.00	0.00	0.00	0.00	0.00	0.00	0.00	0.00	0.00			
110	0.14	0.33	0.74	0.81	0.26	0.00	0.00	0.00	0.00	0.00	0.00	0.00	0.00	0.00	0.00	0.00	0.00			
115	2.52	2.55	2.25	1.28	0.00	0.00	0.00	0.00	0.00	0.00	0.00	0.00	0.00	0.00	0.00	0.00	0.00			
120	1.15	0.73	0.06	0.00	0.00	0.00	0.00	0.00	0.00	0.00	0.00	0.00	0.00	0.00	0.00	0.23	0.71	0.60		
125	0.00	0.00	0.00	0.00	0.00	0.00	0.00	0.00	0.00	0.00	0.00	0.00	0.00	0.00	0.00	0.00	0.00	0.37		
130	0.00	0.00	0.00	0.00	0.00	0.00	0.00	0.00	0.00	0.00	0.00	0.00	0.00	0.00	0.00	0.00	0.00			
135	0.00	0.00	0.00	0.00	0.00	0.00	0.00	0.00	0.00	0.00	0.00	0.00	0.00	0.00	0.00	0.00	0.00			
140	0.00	0.00	0.00	0.00	0.00	0.00	0.00	0.00	0.00	0.00	0.00	0.00	0.00	0.00	0.00	0.00	0.00			
145	0.00	0.00	0.00	0.00	0.00	0.00	0.00	0.00	0.00	0.00	0.00	0.00	0.00	0.00	0.00	0.00	0.00			
150	0.00	0.00	0.00	0.00	0.00	0.00	0.00	0.00	0.00	0.00	0.00	0.00	0.00	0.00	0.00	0.00	0.00			
155	0.00	0.00	0.00	0.00	0.00	0.00	0.00	0.00	0.00	0.00	0.00	0.00	0.00	0.00	0.00	0.00	0.00			
160	0.00	0.00	0.00	0.00	0.00	0.00	0.00	0.00	0.00	0.00	0.00	0.00	0.00	0.00	0.00	0.00	0.00			
165	0.00	0.00	0.00	0.00	0.00	0.00	0.00	0.00	0.00	0.00	0.00	0.00	0.00	0.00	0.00	0.00	0.00			
170	0.00	0.00	0.00	0.00	0.00	0.00	0.00	0.00	0.00	0.00	0.00	0.00	0.00	0.00	0.00	0.00	0.00			
175	0.00	0.00	0.00	0.00	0.00	0.00	0.00	0.00	0.00	0.00	0.00	0.00	0.00	0.00	0.00	0.00	0.00			
180	0.00	0.00	0.00	0.00	0.00	0.00	0.00	0.00	0.00	0.00	0.00	0.00	0.00	0.00	0.00	0.00	0.00			

C Range: 0 - 360DEG
 C Interval: 10.0DEG
 Test Speed: HIGH
 Temperature:25.3DEG
 Operators:Q
 Test Date:2024-04-15

γ Range: 0 - 180DEG
 γ Interval: 1.0DEG
 Test System:EVERFINE GO-2000A_V1 SYSTEM V2.00.421
 Humidity:65.0%
 Test Distance:10.000m [K=1.0000]
 Remarks: