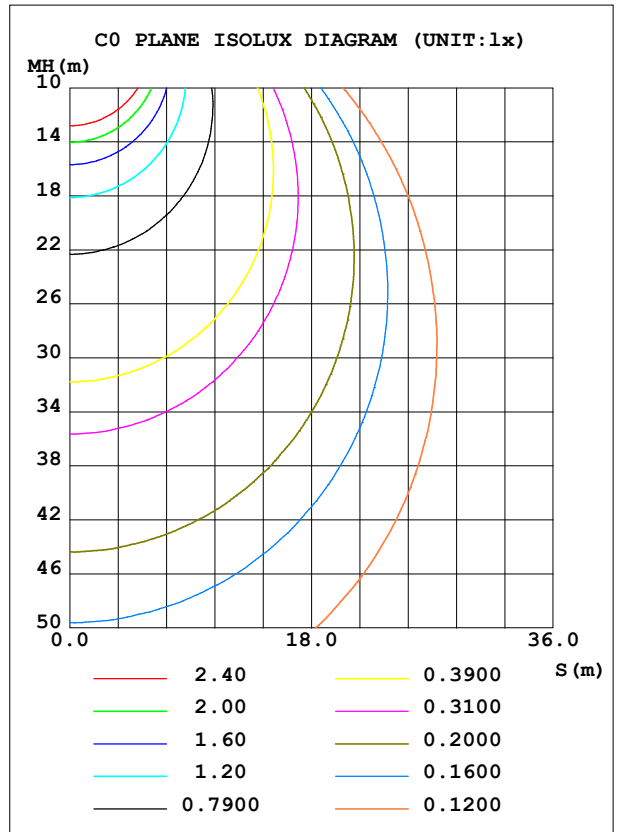
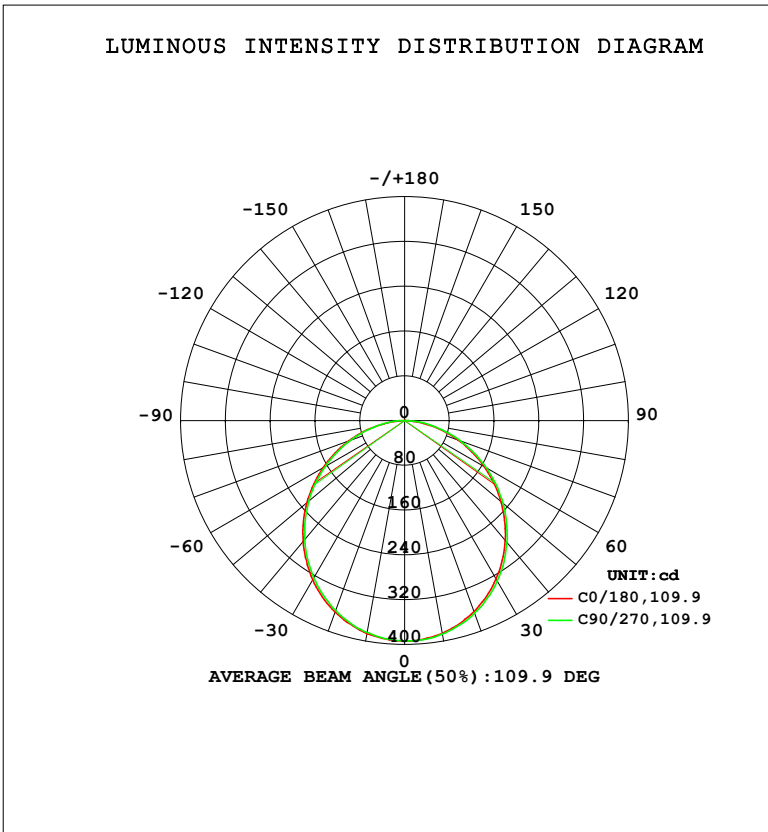


LUMINAIRE PHOTOMETRIC TEST REPORT

Test:U:119.69V I:0.1182A P:13.905W PF:0.9826 Freq:59.98Hz		
UTHDi:0.00% ITHDi:0.00% KDisp:0 Lamp Flux:1096.29x1 lm		
NAME: DL-FR-5CCT-6-WH	TYPE:	WEIGHT:
SPEC.: 3000K 90	DIM.:	SERIAL No.:
MFR.: MAGICLITE	SUR.:	Shielding Angle:

DATA OF LAMP		PHOTOMETRIC DATA			
MODEL	DL-FR-5CCT-6-WH	Imax (cd)	394.1	S/MH (C0/180)	1.24
NOMINAL POWER (W)	15	LOR (%)	100.0	S/MH (C90/270)	1.23
RATED VOLTAGE (V)	120	TOTAL FLUX (lm)	1096.3	$\eta$ UP, DN (C0-180)	0.0, 50.5
NOMINAL FLUX (lm)	1096.29	CIE CLASS	DIRECT	$\eta$ UP, DN (C180-360)	0.0, 49.5
LAMPS INSIDE	1	$\eta$ up (%)	0.0	CIBSE SHR NOM	1.25
TEST VOLTAGE (V)	120	$\eta$ down (%)	100.0	CIBSE SHR MAX	1.35



C Range: 0 - 360DEG  
 C Interval: 22.5DEG  
 Test Speed: HIGH  
 Temperature: 24.3 °C  
 Operators:  
 Test Date: 2024-01-24

$\gamma$  Range: 0 - 90DEG  
 $\gamma$  Interval: 1.0DEG  
 Test System: EVERFINE GO-SPEX500\_V1 SYSTEM V2.00.460  
 Humidity: 65.0%  
 Test Distance: 3.080m [K=1.0000]  
 Remarks:

**ZONAL FLUX DIAGRAM**

ZONAL FLUX DIAGRAM:

$\gamma$	C0	C45	C90	C135	C180	C225	C270	C315	$\gamma$	$\Phi$ zone	$\Phi$ total	%lum, lamp
10	385.9	386.9	387.4	386.5	386.5	384.7	384.5	384.7	0- 10	37.20	37.20	3.39,3.39
20	362.7	365.7	365.8	365.1	363.6	361.2	360.8	362.0	10- 20	106.2	143.4	13.1,13.1
30	326.8	329.4	331.0	330.2	328.2	324.2	324.7	325.5	20- 30	159.8	303.2	27.7,27.7
40	279.6	282.8	284.5	284.5	282.2	277.6	277.7	277.8	30- 40	191.0	494.2	45.1,45.1
50	224.4	227.2	229.5	229.7	228.1	223.3	223.2	224.4	40- 50	196.1	690.3	63,63
60	163.9	166.3	168.8	169.1	167.6	163.3	163.6	164.1	50- 60	175.6	865.9	79,79
70	102.1	104.0	105.9	106.8	105.9	101.9	102.2	102.5	60- 70	133.4	999.3	91.2,91.2
80	40.18	44.05	46.99	46.35	43.51	42.75	44.55	42.74	70- 80	77.64	1077	98.2,98.2
90	0.4672	0.4741	0.6141	0.4889	0.3070	0.3176	0.3533	0.3315	80- 90	19.32	1096	100,100
100									90-100			
110									100-110			
120									110-120			
130									120-130			
140									130-140			
150									140-150			
160									150-160			
170									160-170			
180									170-180			
DEG	LUMINOUS INTENSITY:cd									UNIT:lm		

Conical surface Flux(90deg): 593.25 lm

%lum = 54.1%

%lamp = 54.1%

Conical surface Flux(130deg): 938.96 lm

%lum = 85.6%

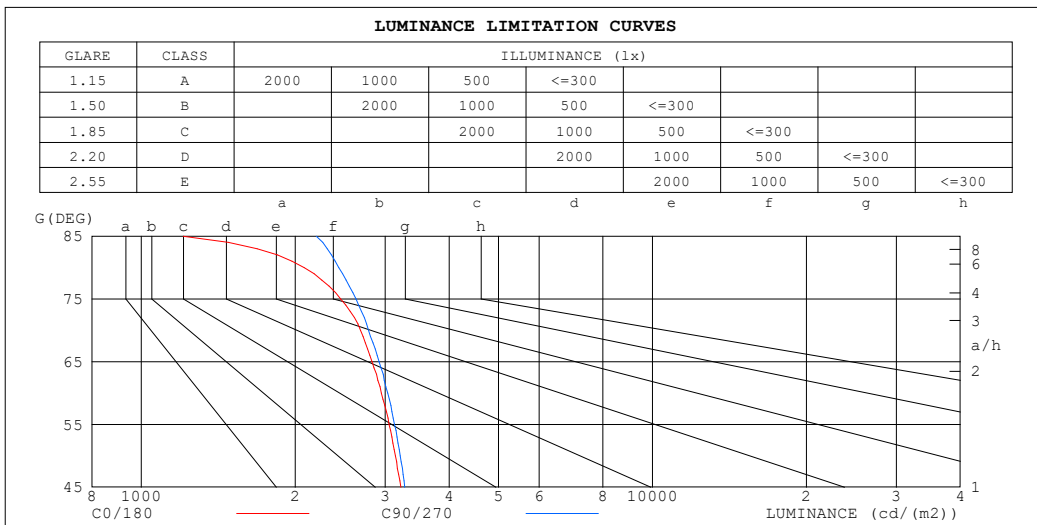
%lamp = 85.6%

C Range: 0 - 360DEG  
 C Interval: 22.5DEG  
 Test Speed: HIGH  
 Temperature:24.3 °C  
 Operators:  
 Test Date:2024-01-24

$\gamma$  Range: 0 - 90DEG  
 $\gamma$  Interval: 1.0DEG  
 Test System:EVERFINE GO-SPEX500\_V1 SYSTEM V2.00.460  
 Humidity:65.0%  
 Test Distance:3.080m [K=1.0000]  
 Remarks:

**LUMINANCE LIMITATION CURVES**

Test:U:119.69V I:0.1182A P:13.905W PF:0.9826 Freq:59.98Hz UTHDi:0.00% ITHDi:0.00% KDisp:0 Lamp Flux:1096.29x1 lm		
NAME: DL-FR-5CCT-6-WH	TYPE:	WEIGHT:
SPEC.: 3000K 90	DIM.:	SERIAL No.:
MFR.: MAGICLITE	SUR.:	Shielding Angle:



LUMINANCE cd/(m2)		
G (DEG)	C0/180	C90/270
85	1208	2201
80	2082	2434
75	2455	2630
70	2685	2785
65	2827	2918
60	2949	3036
55	3054	3129
50	3140	3211
45	3217	3275

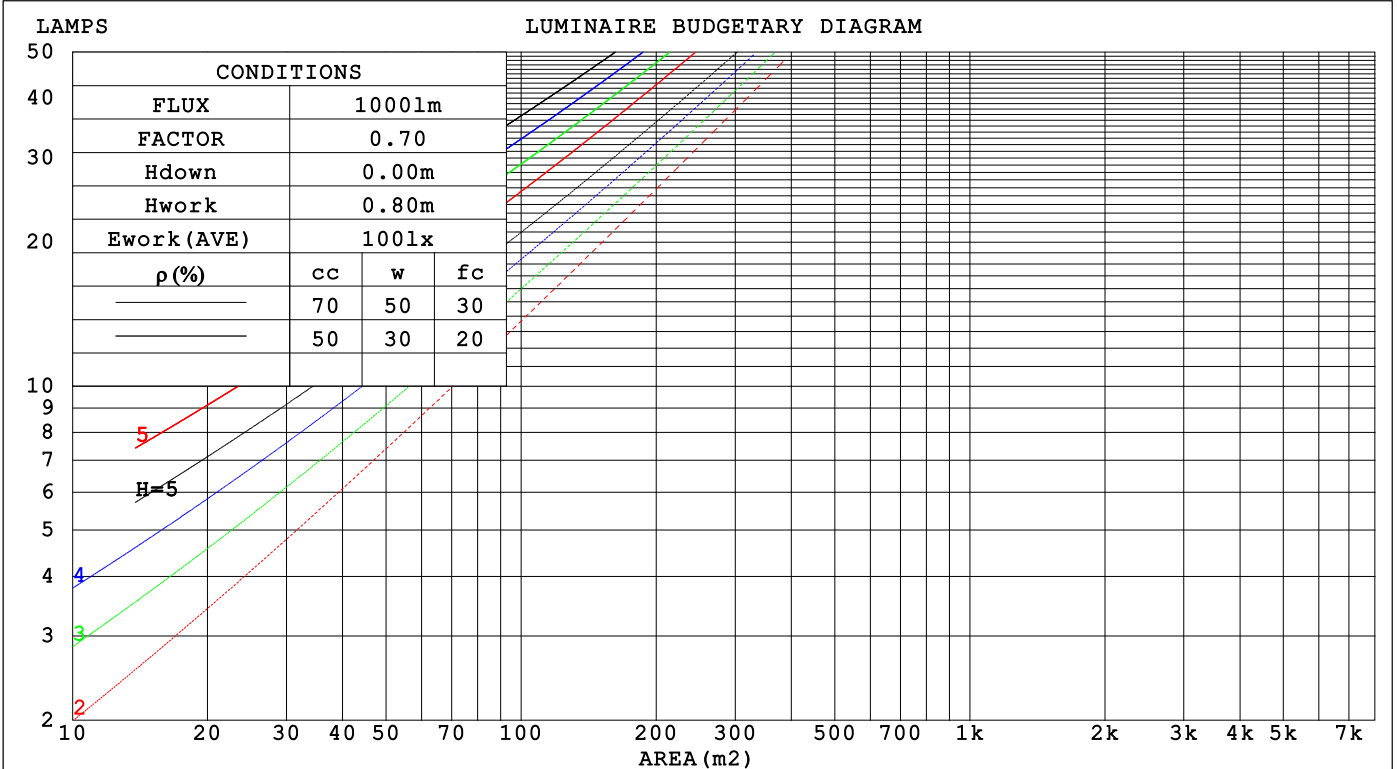
C Range: 0 - 360DEG  
 C Interval: 22.5DEG  
 Test Speed: HIGH  
 Temperature: 24.3°C  
 Operators:  
 Test Date: 2024-01-24

γ Range: 0 - 90DEG  
 γ Interval: 1.0DEG  
 Test System: EVERFINE GO-SPEX500\_V1 SYSTEM V2.00.460  
 Humidity: 65.0%  
 Test Distance: 3.080m [K=1.0000]  
 Remarks:

**CU AND LUMINAIRE BUDGETARY ESTIMATE DIAGRAM**

Test:U:119.69V I:0.1182A P:13.905W PF:0.9826 Freq:59.98Hz		
UTHDI:0.00% ITHDI:0.00% KDisp:0 Lamp Flux:1096.29x1 lm		
NAME: DL-FR-5CCT-6-WH	TYPE:	WEIGHT:
SPEC.: 3000K 90	DIM.:	SERIAL No.:
MFR.: MAGICLITE	SUR.:	Shielding Angle:

pcc	80%			70%			50%			30%			10%			0
pw	50%	30%	10%	50%	30%	10%	50%	30%	10%	50%	30%	10%	50%	30%	10%	0
pfc	20%			20%			20%			20%			20%			0
RCR	RCR:Room Cavity Ratio															
	Coefficients of Utilization(CU)															
0.0	1.19	1.19	1.19	1.16	1.16	1.16	1.11	1.11	1.11	1.06	1.06	1.06	1.02	1.02	1.02	1.00
1.0	1.04	.00	.96	1.02	.98	.94	.97	.94	.91	.94	.91	.88	.90	.88	.86	.84
2.0	.91	.84	.78	.89	.82	.77	.85	.80	.75	.82	.77	.74	.79	.75	.72	.70
3.0	.80	.71	.65	.78	.70	.64	.75	.68	.63	.72	.67	.62	.70	.65	.61	.59
4.0	.70	.62	.55	.69	.61	.54	.67	.59	.54	.64	.58	.53	.62	.57	.52	.50
5.0	.63	.54	.47	.62	.53	.47	.60	.52	.46	.58	.51	.46	.56	.50	.45	.43
6.0	.57	.48	.41	.56	.47	.41	.54	.46	.41	.52	.45	.40	.51	.45	.40	.38
7.0	.51	.43	.36	.51	.42	.36	.49	.42	.36	.48	.41	.36	.46	.40	.35	.33
8.0	.47	.38	.33	.46	.38	.32	.45	.37	.32	.44	.37	.32	.42	.36	.32	.30
9.0	.43	.35	.29	.42	.35	.29	.41	.34	.29	.40	.34	.29	.39	.33	.29	.27
10.0	.40	.32	.27	.39	.32	.26	.38	.31	.26	.37	.31	.26	.36	.30	.26	.24



C Range: 0 - 360DEG  
 C Interval: 22.5DEG  
 Test Speed: HIGH  
 Temperature:24.3°C  
 Operators:  
 Test Date:2024-01-24

γ Range: 0 - 90DEG  
 γ Interval: 1.0DEG  
 Test System:EVERFINE GO-SPEX500\_V1 SYSTEM V2.00.460  
 Humidity:65.0%  
 Test Distance:3.080m [K=1.0000]  
 Remarks:

**WEC AND CCEC**

Test:U:119.69V I:0.1182A P:13.905W PF:0.9826 Freq:59.98Hz		
UTHDi:0.00% ITHDi:0.00% KDisp:0 Lamp Flux:1096.29x1 lm		
NAME: DL-FR-5CCT-6-WH	TYPE:	WEIGHT:
SPEC.: 3000K 90	DIM.:	SERIAL No.:
MFR.: MAGICLITE	SUR.:	Shielding Angle:

$\rho_{CC}$	80%			70%			50%			30%			10%			0
$\rho_w$	50%	30%	10%	50%	30%	10%	50%	30%	10%	50%	30%	10%	50%	30%	10%	0
$\rho_{fc}$	20%			20%			20%			20%			20%			0
RCR	RCR:Room Cavity Ratio						Wall Exitance Coefficients(WEC)									
0.0																
1.0	.308	.175	.055	.301	.172	.055	.288	.165	.053	.276	.159	.051	.264	.153	.049	
2.0	.290	.159	.049	.284	.157	.048	.273	.152	.047	.262	.147	.046	.252	.142	.045	
3.0	.269	.143	.043	.263	.141	.042	.253	.137	.042	.244	.133	.041	.235	.130	.040	
4.0	.248	.129	.038	.243	.127	.038	.234	.124	.037	.226	.121	.037	.218	.118	.036	
5.0	.230	.117	.034	.225	.116	.034	.217	.113	.033	.210	.111	.033	.203	.108	.033	
6.0	.213	.107	.031	.209	.106	.030	.202	.103	.030	.195	.101	.030	.189	.099	.030	
7.0	.198	.098	.028	.195	.097	.028	.188	.095	.027	.182	.093	.027	.177	.092	.027	
8.0	.185	.090	.025	.182	.090	.025	.176	.088	.025	.171	.087	.025	.166	.085	.025	
9.0	.174	.084	.023	.171	.083	.023	.166	.082	.023	.161	.081	.023	.156	.079	.023	
10.0	.163	.078	.022	.161	.078	.022	.156	.076	.022	.152	.075	.021	.147	.074	.021	

$\rho_{CC}$	80%			70%			50%			30%			10%			0
$\rho_w$	50%	30%	10%	50%	30%	10%	50%	30%	10%	50%	30%	10%	50%	30%	10%	0
$\rho_{fc}$	20%			20%			20%			20%			20%			0
RCR	RCR:Room Cavity Ratio						Ceiling Cavity Exitance Coefficients(CCEC)									
0.0	.190	.190	.190	.163	.163	.163	.111	.111	.111	.064	.064	.064	.020	.020	.020	
1.0	.180	.156	.135	.154	.134	.116	.105	.092	.080	.061	.053	.047	.019	.017	.015	
2.0	.172	.132	.098	.147	.114	.085	.101	.079	.059	.058	.046	.035	.019	.015	.011	
3.0	.164	.114	.074	.141	.099	.065	.097	.068	.045	.056	.040	.027	.018	.013	.009	
4.0	.157	.101	.058	.134	.087	.051	.092	.061	.036	.053	.036	.021	.017	.012	.007	
5.0	.149	.091	.047	.128	.078	.041	.088	.055	.029	.051	.032	.017	.016	.010	.006	
6.0	.142	.082	.039	.122	.071	.034	.084	.050	.024	.049	.029	.014	.016	.010	.005	
7.0	.135	.075	.033	.116	.065	.029	.080	.046	.021	.047	.027	.012	.015	.009	.004	
8.0	.129	.069	.029	.111	.060	.025	.077	.042	.018	.045	.025	.011	.014	.008	.004	
9.0	.123	.065	.025	.106	.056	.022	.073	.039	.016	.043	.023	.009	.014	.008	.003	
10.0	.117	.060	.022	.101	.052	.020	.070	.037	.014	.041	.022	.008	.013	.007	.003	

C Range: 0 - 360DEG  
 C Interval: 22.5DEG  
 Test Speed: HIGH  
 Temperature:24.3°C  
 Operators:  
 Test Date:2024-01-24

$\gamma$  Range: 0 - 90DEG  
 $\gamma$  Interval: 1.0DEG  
 Test System:EVERFINE GO-SPEX500\_V1 SYSTEM V2.00.460  
 Humidity:65.0%  
 Test Distance:3.080m [K=1.0000]  
 Remarks:

**UGR(Unified Glare Rating) Table**

Test:U:119.69V I:0.1182A P:13.905W PF:0.9826 Freq:59.98Hz UTHDi:0.00% ITHDi:0.00% KDisp:0 Lamp Flux:1096.29x1 lm										
NAME: DL-FR-5CCT-6-WH					TYPE:			WEIGHT:		
SPEC.: 3000K 90					DIM.:			SERIAL No.:		
MFR.: MAGICLITE					SUR.:			Shielding Angle:		
ceiling/cavity	0.7	0.7	0.5	0.5	0.3	0.7	0.7	0.5	0.5	0.3
walls	0.5	0.3	0.5	0.3	0.3	0.5	0.3	0.5	0.3	0.3
working plane	0.2	0.2	0.2	0.2	0.2	0.2	0.2	0.2	0.2	0.2
Room dimensions	Viewed crosswise					Viewed endwise				
x = 2H y = 2H	16.4	17.9	16.7	18.1	18.3	16.5	18.1	16.8	18.3	18.5
3H	17.9	19.3	18.2	19.5	19.8	18.1	19.5	18.4	19.7	19.9
4H	18.5	19.8	18.8	20.1	20.3	18.7	20.0	19.0	20.3	20.5
6H	18.9	20.1	19.2	20.4	20.7	19.2	20.4	19.5	20.7	21.0
8H	19.0	20.2	19.3	20.5	20.8	19.3	20.5	19.7	20.8	21.1
12H	19.0	20.2	19.4	20.5	20.8	19.4	20.6	19.8	20.9	21.2
4H 2H	17.0	18.4	17.4	18.6	18.9	17.1	18.5	17.4	18.7	19.0
3H	18.7	19.9	19.1	20.2	20.5	18.8	20.0	19.2	20.3	20.6
4H	19.4	20.5	19.8	20.8	21.2	19.6	20.7	20.0	21.0	21.3
6H	19.9	20.9	20.3	21.2	21.6	20.2	21.2	20.6	21.5	21.9
8H	20.1	21.0	20.5	21.3	21.7	20.4	21.3	20.8	21.7	22.1
12H	20.1	21.0	20.6	21.3	21.7	20.6	21.4	21.0	21.8	22.2
8H 4H	19.7	20.6	20.1	21.0	21.3	19.9	20.8	20.3	21.1	21.5
6H	20.4	21.1	20.8	21.5	21.9	20.6	21.4	21.1	21.8	22.2
8H	20.6	21.2	21.0	21.7	22.1	20.9	21.6	21.4	22.0	22.5
12H	20.7	21.3	21.2	21.7	22.2	21.2	21.7	21.6	22.2	22.7
12H 4H	19.7	20.5	20.2	20.9	21.3	19.9	20.7	20.3	21.1	21.5
6H	20.4	21.1	20.9	21.5	22.0	20.7	21.3	21.1	21.8	22.2
8H	20.7	21.2	21.2	21.7	22.2	21.0	21.6	21.5	22.0	22.5
Variations with the observer position at spacings(CIE Pub.117):										
S = 1.0H	+ 0.2 / - 0.2					+ 0.2 / - 0.2				
1.5H	+ 0.2 / - 0.3					+ 0.2 / - 0.3				
2.0H	+ 0.2 / - 0.3					+ 0.2 / - 0.3				

CIE Pub.117, 1096 lm Total Lamp Luminous Flux Correct (8log(F/F0) = 0.3)  
 Area: 0.111111 m2

C Range: 0 - 360DEG  
 C Interval: 22.5DEG  
 Test Speed: HIGH  
 Temperature:24.3°C  
 Operators:  
 Test Date:2024-01-24

γ Range: 0 - 90DEG  
 γ Interval: 1.0DEG  
 Test System:EVERFINE GO-SPEX500\_V1 SYSTEM V2.00.460  
 Humidity:65.0%  
 Test Distance:3.080m [K=1.0000]  
 Remarks:

**UTILIZATION FACTORS TABLE**

Test:U:119.69V I:0.1182A P:13.905W PF:0.9826 Freq:59.98Hz UTHDi:0.00% ITHDi:0.00% KDisp:0 Lamp Flux:1096.29x1 lm		
NAME: DL-FR-5CCT-6-WH	TYPE:	WEIGHT:
SPEC.: 3000K 90	DIM.:	SERIAL No.:
MFR.: MAGICLITE	SUR.:	Shielding Angle:

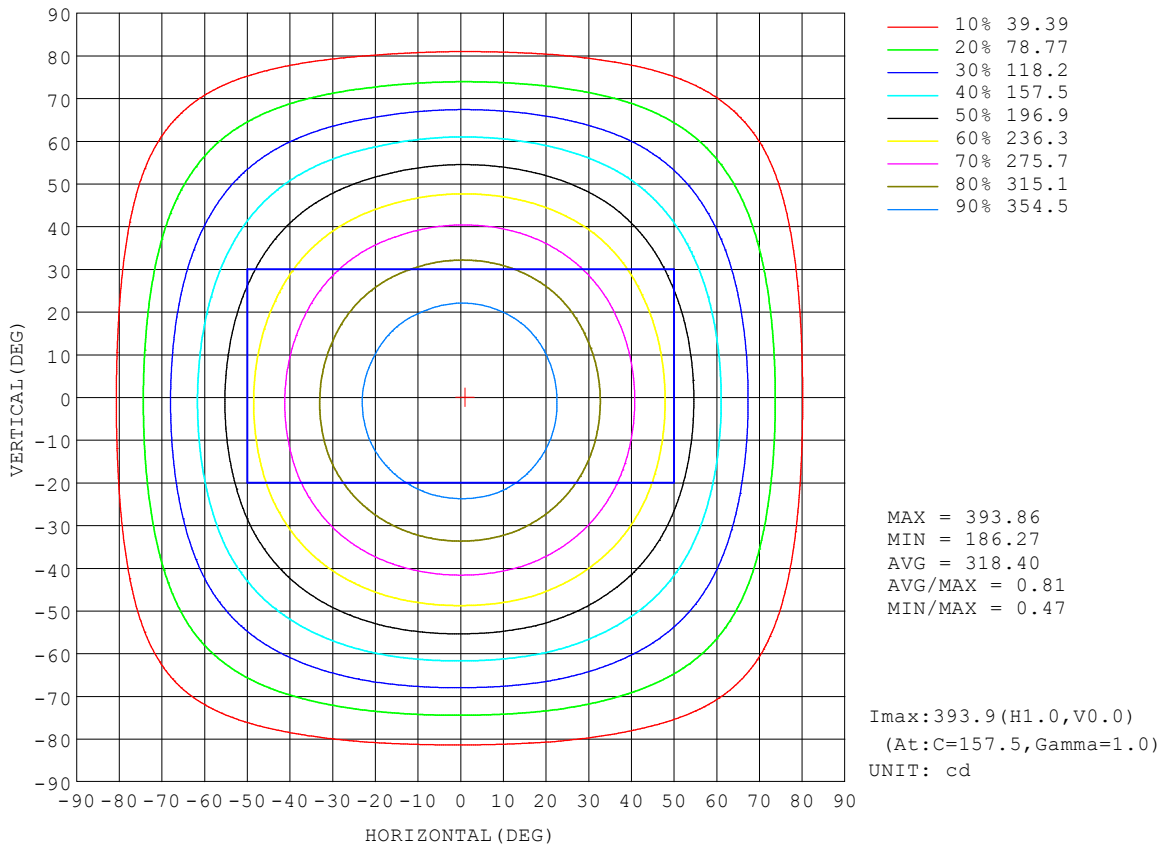
REFLECTANCE										
Ceiling	0.8	0.8	0.8	0.7	0.7	0.7	0.5	0.5	0.5	0
Walls	0.7	0.5	0.3	0.7	0.5	0.3	0.7	0.5	0.3	0
Working plane	0.2	0.2	0.2	0.2	0.2	0.2	0.2	0.2	0.2	0
ROOM INDEX	UTILIZATION FACTORS (PERCENT) $k(RI) \times RCR = 5$									
$k = 0.60$	58	46	39	57	46	39	56	45	39	33
0.80	68	56	49	67	56	49	65	55	48	41
1.00	76	65	58	75	65	58	73	66	57	50
1.25	83	73	66	82	72	65	79	71	64	57
1.50	88	78	71	87	78	71	84	76	70	62
2.00	95	87	80	93	85	79	90	83	78	70
2.50	99	91	85	97	90	84	93	87	82	74
3.00	102	95	90	100	94	89	96	91	87	78
4.00	106	101	96	104	99	95	100	96	92	83
5.00	109	104	100	106	102	98	102	98	95	86
ROOM INDEX	UF(total)									Direct
According to DIN EN 13032-2 2004			Suspended				SHRNOM = 1.25			

C Range: 0 - 360DEG  
 C Interval: 22.5DEG  
 Test Speed: HIGH  
 Temperature:24.3°C  
 Operators:  
 Test Date:2024-01-24

$\gamma$  Range: 0 - 90DEG  
 $\gamma$  Interval: 1.0DEG  
 Test System:EVERFINE GO-SPEX500\_V1 SYSTEM V2.00.460  
 Humidity:65.0%  
 Test Distance:3.080m [K=1.0000]  
 Remarks:

**ISOCANDELA DIAGRAM**

Test:U:119.69V I:0.1182A P:13.905W PF:0.9826 Freq:59.98Hz UTHDi:0.00% ITHDi:0.00% KDisp:0 Lamp Flux:1096.29x1 lm		
NAME: DL-FR-5CCT-6-WH	TYPE:	WEIGHT:
SPEC.: 3000K 90	DIM.:	SERIAL No.:
MFR.: MAGICLITE	SUR.:	Shielding Angle:



C Range: 0 - 360DEG  
 C Interval: 22.5DEG  
 Test Speed: HIGH  
 Temperature:24.3°C  
 Operators:  
 Test Date:2024-01-24

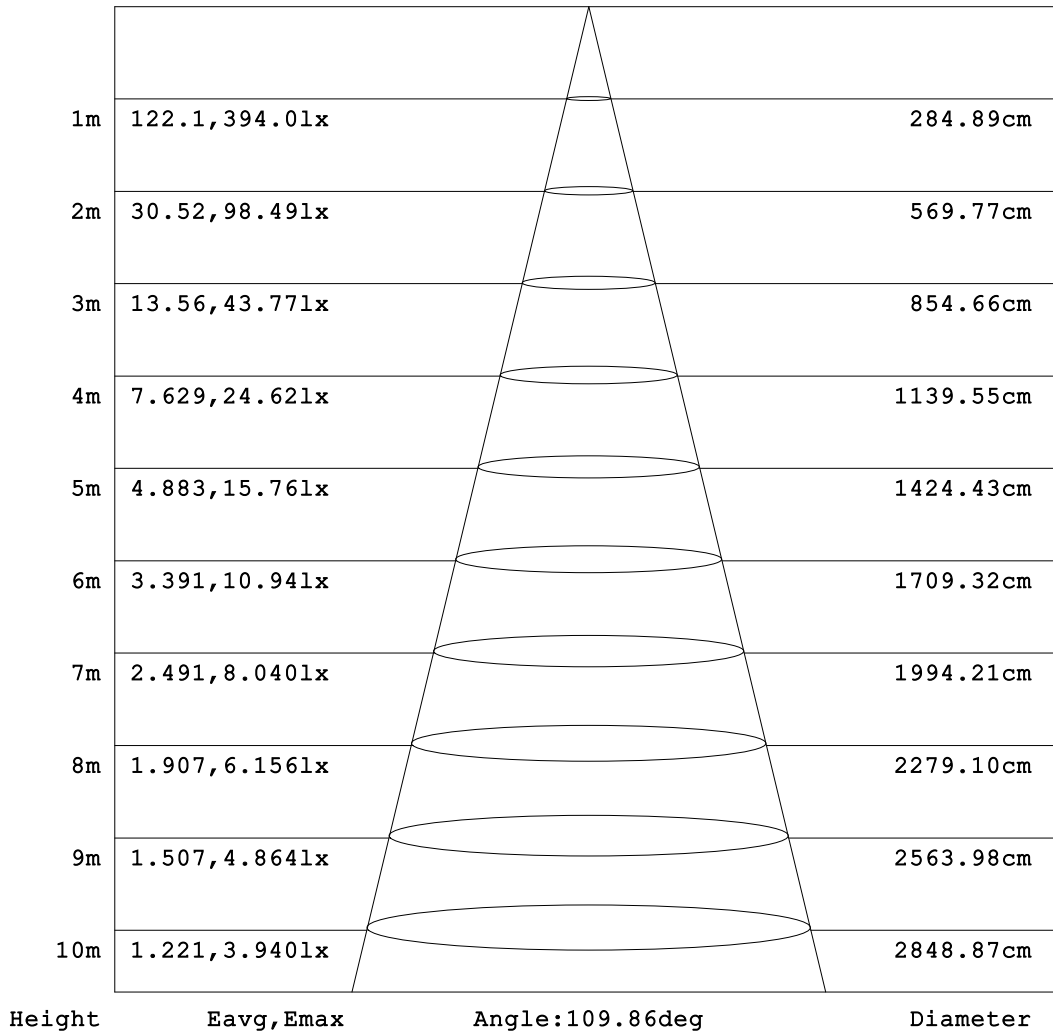
γ Range: 0 - 90DEG  
 γ Interval: 1.0DEG  
 Test System:EVERFINE GO-SPEX500\_V1 SYSTEM V2.00.460  
 Humidity:65.0%  
 Test Distance:3.080m [K=1.0000]  
 Remarks:



**AAI Figure**

Test:U:119.69V I:0.1182A P:13.905W PF:0.9826 Freq:59.98Hz		
UTHDi:0.00% ITHDi:0.00% KDisp:0 Lamp Flux:1096.29x1 lm		
NAME: DL-FR-5CCT-6-WH	TYPE:	WEIGHT:
SPEC.: 3000K 90	DIM.:	SERIAL No.:
MFR.: MAGICLITE	SUR.:	Shielding Angle:

Flux out:782.2 lm



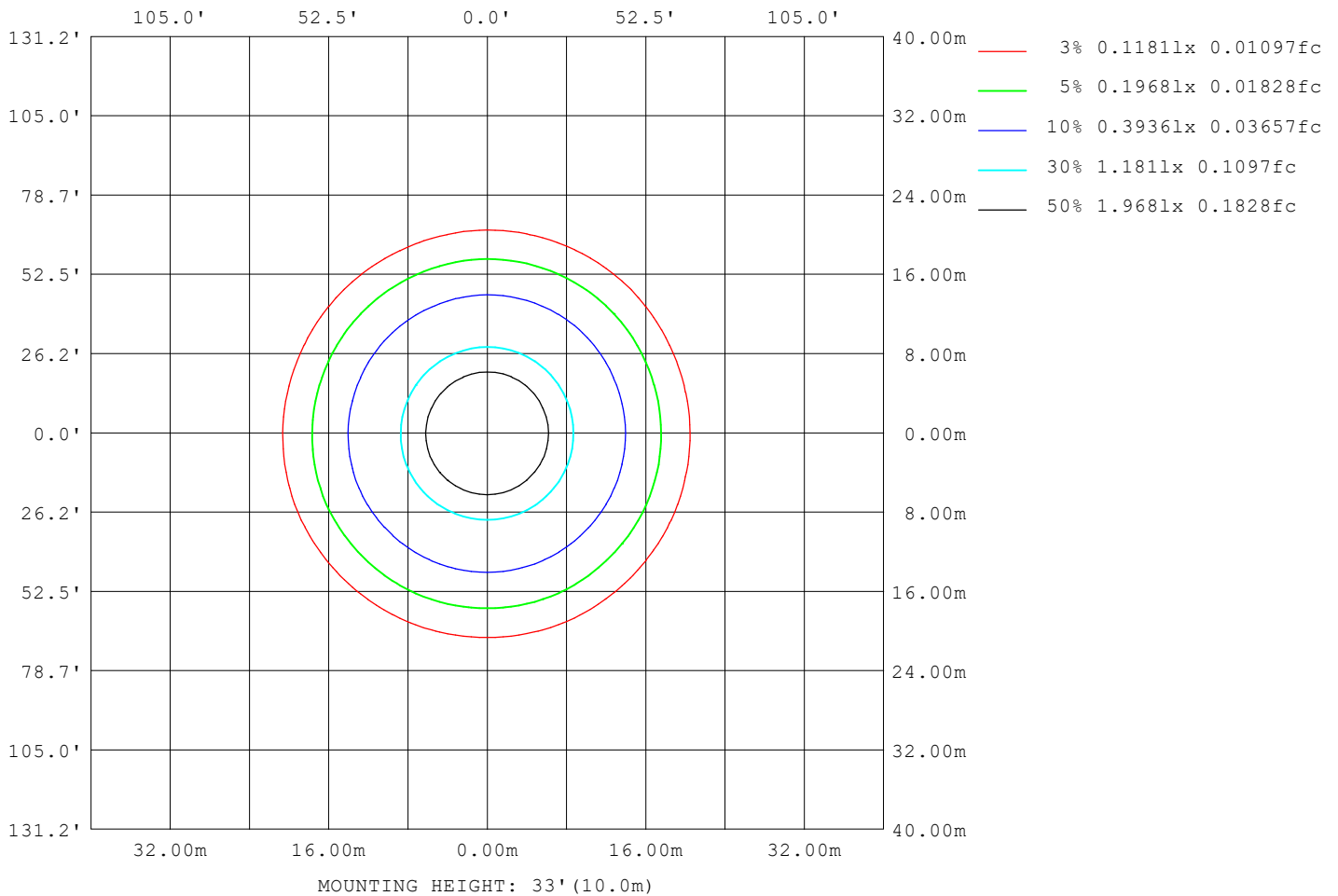
Note: The Curves indicate the illuminated area and the average illumination when the luminaire is at different distance.

C Range: 0 - 360DEG  
 C Interval: 22.5DEG  
 Test Speed: HIGH  
 Temperature: 24.3 °C  
 Operators:  
 Test Date: 2024-01-24

γ Range: 0 - 90DEG  
 γ Interval: 1.0DEG  
 Test System: EVERFINE GO-SPEX500\_V1 SYSTEM V2.00.460  
 Humidity: 65.0%  
 Test Distance: 3.080m [K=1.0000]  
 Remarks:

**ISOLUX DIAGRAM**

Test:U:119.69V I:0.1182A P:13.905W PF:0.9826 Freq:59.98Hz UTHDi:0.00% ITHDi:0.00% KDisp:0 Lamp Flux:1096.29x1 lm		
NAME: DL-FR-5CCT-6-WH	TYPE:	WEIGHT:
SPEC.: 3000K 90	DIM.:	SERIAL No.:
MFR.: MAGICLITE	SUR.:	Shielding Angle:



C Range: 0 - 360DEG  
 C Interval: 22.5DEG  
 Test Speed: HIGH  
 Temperature:24.3°C  
 Operators:  
 Test Date:2024-01-24

γ Range: 0 - 90DEG  
 γ Interval: 1.0DEG  
 Test System:EVERFINE GO-SPEX500\_V1 SYSTEM V2.00.460  
 Humidity:65.0%  
 Test Distance:3.080m [K=1.0000]  
 Remarks:

**LED Avg.L Report**

Test:U:119.69V I:0.1182A P:13.905W PF:0.9826 Freq:59.98Hz UTHDi:0.00% ITHDi:0.00% KDisp:0 Lamp Flux:1096.29x1 lm		
NAME: DL-FR-5CCT-6-WH	TYPE:	WEIGHT:
SPEC.: 3000K 90	DIM.:	SERIAL No.:
MFR.: MAGICLITE	SUR.:	Shielding Angle:

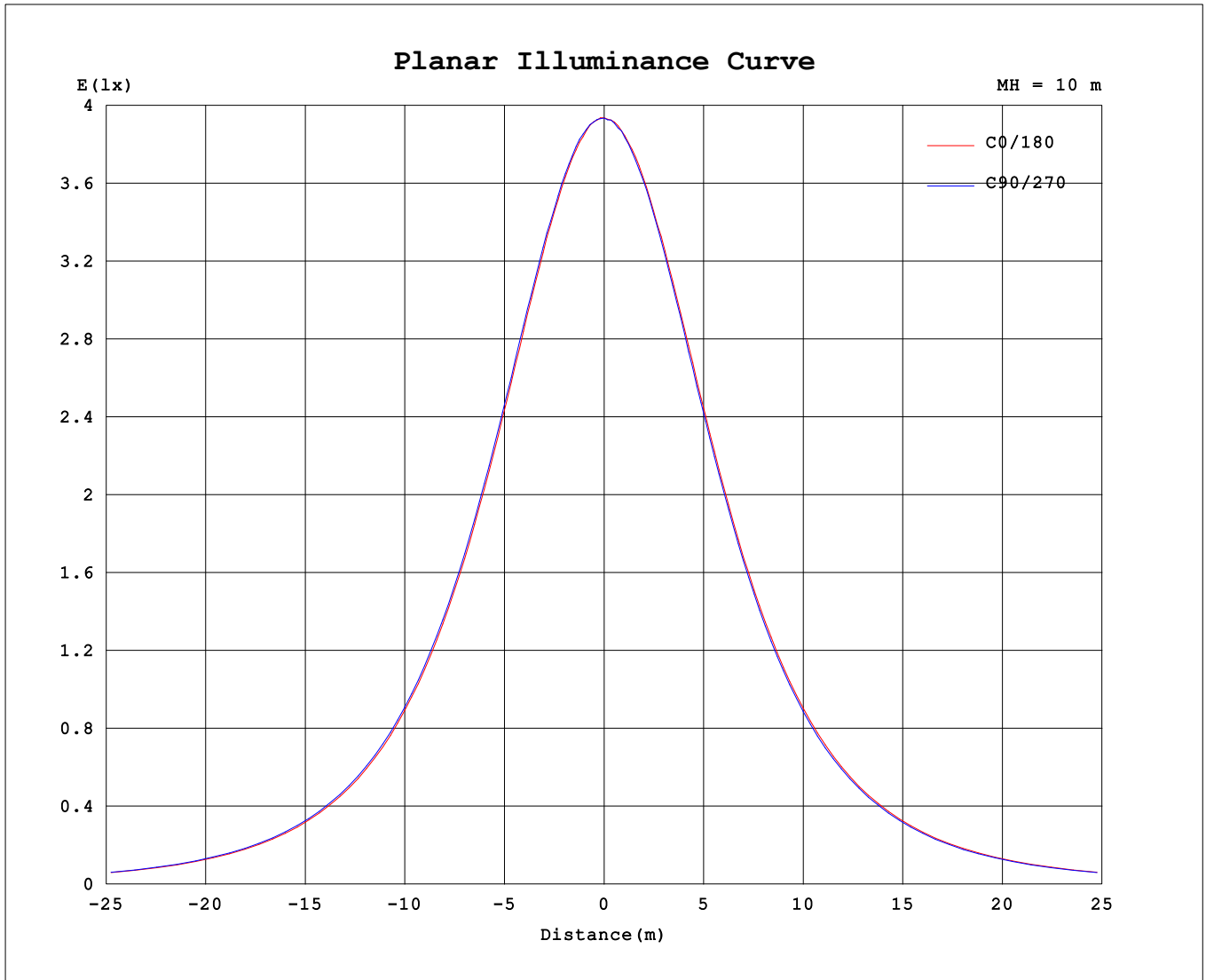
AvgL	cd/m2
L_0~180 (65) av	2871
L_0~180 (75) av	2527
L_0~180 (85) av	1338
L_90~270 (65) av	2874
L_90~270 (75) av	2573
L_90~270 (85) av	2102
L_45 (65) av	2869
L_45 (75) av	2560
L_45 (85) av	1655

Standard: GB/T 29293-2012

C Range: 0 - 360DEG  
 C Interval: 22.5DEG  
 Test Speed: HIGH  
 Temperature:24.3℃  
 Operators:  
 Test Date:2024-01-24

γ Range: 0 - 90DEG  
 γ Interval: 1.0DEG  
 Test System:EVERFINE GO-SPEX500\_V1 SYSTEM V2.00.460  
 Humidity:65.0%  
 Test Distance:3.080m [K=1.0000]  
 Remarks:

**Planar Illuminance Curve**



C Range: 0 - 360DEG  
 C Interval: 22.5DEG  
 Test Speed: HIGH  
 Temperature: 24.3 °C  
 Operators:  
 Test Date: 2024-01-24

γ Range: 0 - 90DEG  
 γ Interval: 1.0DEG  
 Test System: EVERFINE GO-SPEX500\_V1 SYSTEM V2.00.460  
 Humidity: 65.0%  
 Test Distance: 3.080m [K=1.0000]  
 Remarks:

LUMINOUS DISTRIBUTION INTENSITY DATA

Test:U:119.69V I:0.1182A P:13.905W PF:0.9826 Freq:59.98Hz		
UTHDi:0.00% ITHDi:0.00% KDisp:0 Lamp Flux:1096.29x1 lm		
NAME: DL-FR-5CCT-6-WH	TYPE:	WEIGHT:
SPEC.: 3000K 90	DIM.:	SERIAL No.:
MFR.: MAGICLITE	SUR.:	Shielding Angle:

Table--1

UNIT: cd

C (DEG) \ γ (DEG)	0	22.5	45	67.5	90	112.5	135	157.5	180	202.5	225	247.5	270	292.5	315	337.5			
0	394	394	394	394	394	394	394	394	394	394	394	394	394	394	394	394			
5	392	392	392	392	392	392	391	392	392	391	391	390	392	391	391	391			
10	386	386	387	387	387	387	387	386	386	385	385	384	384	384	385	385			
15	376	377	378	379	378	378	378	378	376	375	375	374	375	375	374	376			
20	363	363	366	366	366	365	365	365	364	362	361	360	361	361	362	362			
25	346	348	349	350	350	350	349	349	348	346	344	343	344	344	345	345			
30	327	329	329	331	331	330	330	331	328	326	324	323	325	325	325	325			
35	304	306	307	309	309	309	308	309	306	304	302	301	302	302	303	303			
40	280	281	283	285	284	285	285	284	282	279	278	276	278	278	278	278			
45	253	255	256	258	257	258	258	258	256	252	251	249	251	252	252	251			
50	224	226	227	229	229	230	230	230	228	224	223	221	223	224	224	223			
55	195	197	197	199	200	200	200	201	199	195	194	192	194	194	195	193			
60	164	166	166	169	169	169	169	171	168	165	163	162	164	164	164	163			
65	133	134	135	137	137	138	138	139	137	134	133	131	133	133	133	132			
70	102	103	104	106	106	107	107	108	106	103	102	101	102	102	102	101			
75	70.6	72.2	73.7	75.6	75.7	76.2	76.5	76.8	74.7	72.6	72.1	71.4	72.3	72.6	72.2	70.2			
80	40.2	41.9	44.1	46.8	47.0	47.4	46.3	45.9	43.5	42.2	42.8	43.3	44.5	44.4	42.7	40.0			
85	11.7	13.5	16.4	19.9	21.3	20.0	17.8	16.5	14.2	13.6	14.9	17.0	19.4	18.0	15.0	11.7			
90	0.47	0.46	0.47	0.52	0.61	0.55	0.49	0.48	0.31	0.30	0.32	0.38	0.35	0.37	0.33	0.32			

C Range: 0 - 360DEG  
 C Interval: 22.5DEG  
 Test Speed: HIGH  
 Temperature:24.3℃  
 Operators:  
 Test Date:2024-01-24

γ Range: 0 - 90DEG  
 γ Interval: 1.0DEG  
 Test System:EVERFINE GO-SPEX500\_V1 SYSTEM V2.00.460  
 Humidity:65.0%  
 Test Distance:3.080m [K=1.0000]  
 Remarks: