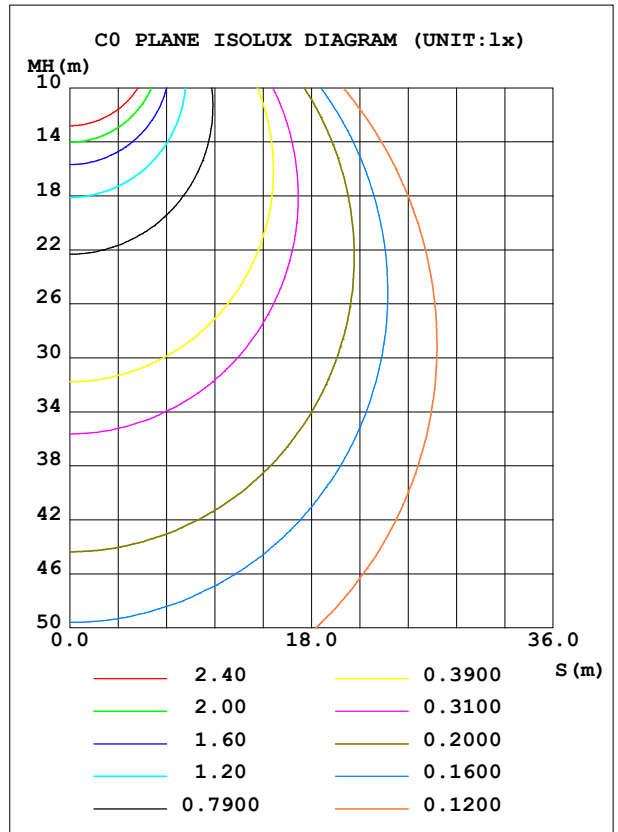
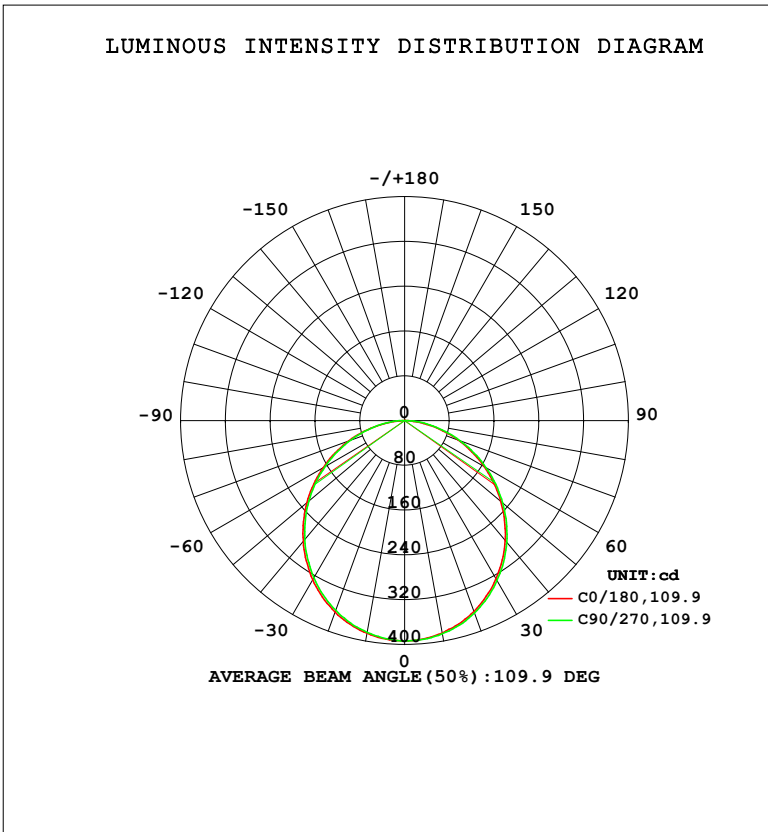


LUMINAIRE PHOTOMETRIC TEST REPORT

Test:U:119.69V I:0.1191A P:14.017W PF:0.9828 Freq:59.98Hz		
UTHDi:0.00% ITHDi:0.00% KDisp:0 Lamp Flux:1096.46x1 lm		
NAME: DL-FR-5CCT-6-WH	TYPE:	WEIGHT:
SPEC.: 5000K 90	DIM.:	SERIAL No.:
MFR.: MAGICLITE	SUR.:	Shielding Angle:

DATA OF LAMP		PHOTOMETRIC DATA			
MODEL	DL-FR-5CCT-6-WH	Imax (cd)	393.9	S/MH (C0/180)	1.24
NOMINAL POWER (W)	15	LOR (%)	100.0	S/MH (C90/270)	1.23
RATED VOLTAGE (V)	120	TOTAL FLUX (lm)	1096.5	$\eta$ UP, DN (C0-180)	0.0, 50.4
NOMINAL FLUX (lm)	1096.46	CIE CLASS	DIRECT	$\eta$ UP, DN (C180-360)	0.0, 49.6
LAMPS INSIDE	1	$\eta$ up (%)	0.0	CIBSE SHR NOM	1.25
TEST VOLTAGE (V)	120	$\eta$ down (%)	100.0	CIBSE SHR MAX	1.35



C Range: 0 - 360DEG  
 C Interval: 22.5DEG  
 Test Speed: HIGH  
 Temperature: 24.3 °C  
 Operators:  
 Test Date: 2024-01-24

$\gamma$  Range: 0 - 90DEG  
 $\gamma$  Interval: 1.0DEG  
 Test System: EVERFINE GO-SPEX500\_V1 SYSTEM V2.00.460  
 Humidity: 65.0%  
 Test Distance: 3.080m [K=1.0000]  
 Remarks:

ZONAL FLUX DIAGRAM

ZONAL FLUX DIAGRAM:

$\gamma$	C0	C45	C90	C135	C180	C225	C270	C315	$\gamma$	$\Phi$ zone	$\Phi$ total	%lum,lamp
10	385.6	386.8	386.8	387.0	385.8	384.4	384.7	385.1	0- 10	37.18	37.18	3.39,3.39
20	362.8	364.8	365.6	365.6	363.8	361.3	360.6	362.0	10- 20	106.2	143.3	13.1,13.1
30	326.6	329.2	330.2	330.6	328.5	324.0	324.2	326.0	20- 30	159.8	303.1	27.6,27.6
40	279.8	282.6	284.0	284.3	281.7	277.5	277.5	279.0	30- 40	190.9	494.1	45.1,45.1
50	224.4	226.9	228.6	230.0	228.0	223.2	223.7	224.8	40- 50	196.1	690.2	62.9,62.9
60	164.0	166.0	168.2	169.5	168.2	163.7	163.9	164.7	50- 60	175.6	865.8	79,79
70	102.2	103.9	105.6	107.2	106.0	102.2	102.3	102.8	60- 70	133.5	999.4	91.1,91.1
80	40.21	43.72	46.77	46.60	43.61	42.77	44.69	43.17	70- 80	77.73	1077	98.2,98.2
90	0.4691	0.4731	0.5744	0.4922	0.3105	0.3171	0.3582	0.3397	80- 90	19.36	1096	100,100
100									90-100			
110									100-110			
120									110-120			
130									120-130			
140									130-140			
150									140-150			
160									150-160			
170									160-170			
180									170-180			
DEG	LUMINOUS INTENSITY:cd									UNIT:lm		

Conical surface Flux(90deg): 593.13 lm

%lum = 54.1%

%lamp = 54.1%

Conical surface Flux(130deg): 938.94 lm

%lum = 85.6%

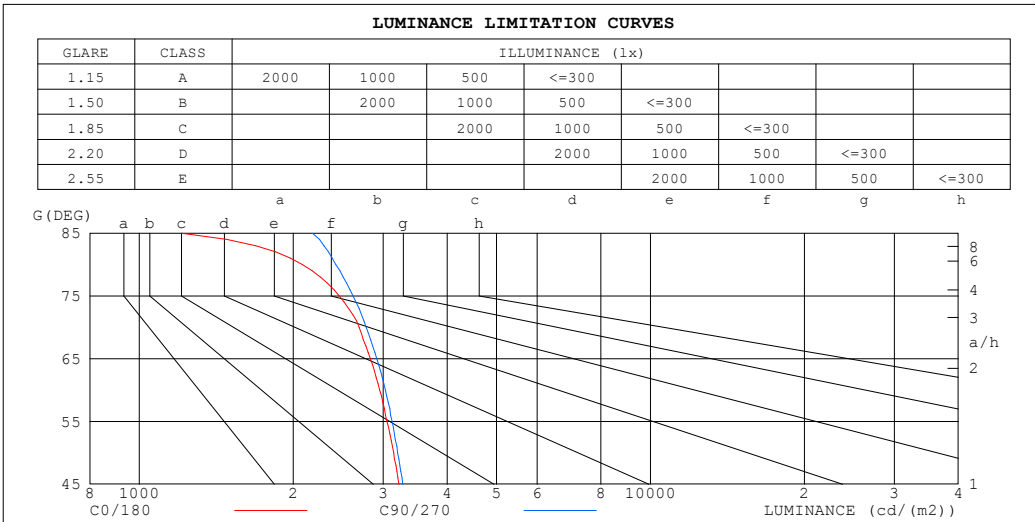
%lamp = 85.6%

C Range: 0 - 360DEG  
 C Interval: 22.5DEG  
 Test Speed: HIGH  
 Temperature:24.3°C  
 Operators:  
 Test Date:2024-01-24

$\gamma$  Range: 0 - 90DEG  
 $\gamma$  Interval: 1.0DEG  
 Test System:EVERFINE GO-SPEX500\_V1 SYSTEM V2.00.460  
 Humidity:65.0%  
 Test Distance:3.080m [K=1.0000]  
 Remarks:

**LUMINANCE LIMITATION CURVES**

Test:U:119.69V I:0.1191A P:14.017W PF:0.9828 Freq:59.98Hz UTHDi:0.00% ITHDi:0.00% KDisp:0 Lamp Flux:1096.46x1 lm		
NAME: DL-FR-5CCT-6-WH	TYPE:	WEIGHT:
SPEC.: 5000K 90	DIM.:	SERIAL No.:
MFR.: MAGICCLITE	SUR.:	Shielding Angle:



LUMINANCE cd/(m2)		
G (DEG)	C0/180	C90/270
85	1210	2179
80	2085	2425
75	2462	2619
70	2690	2780
65	2830	2914
60	2952	3029
55	3053	3122
50	3143	3202
45	3219	3276

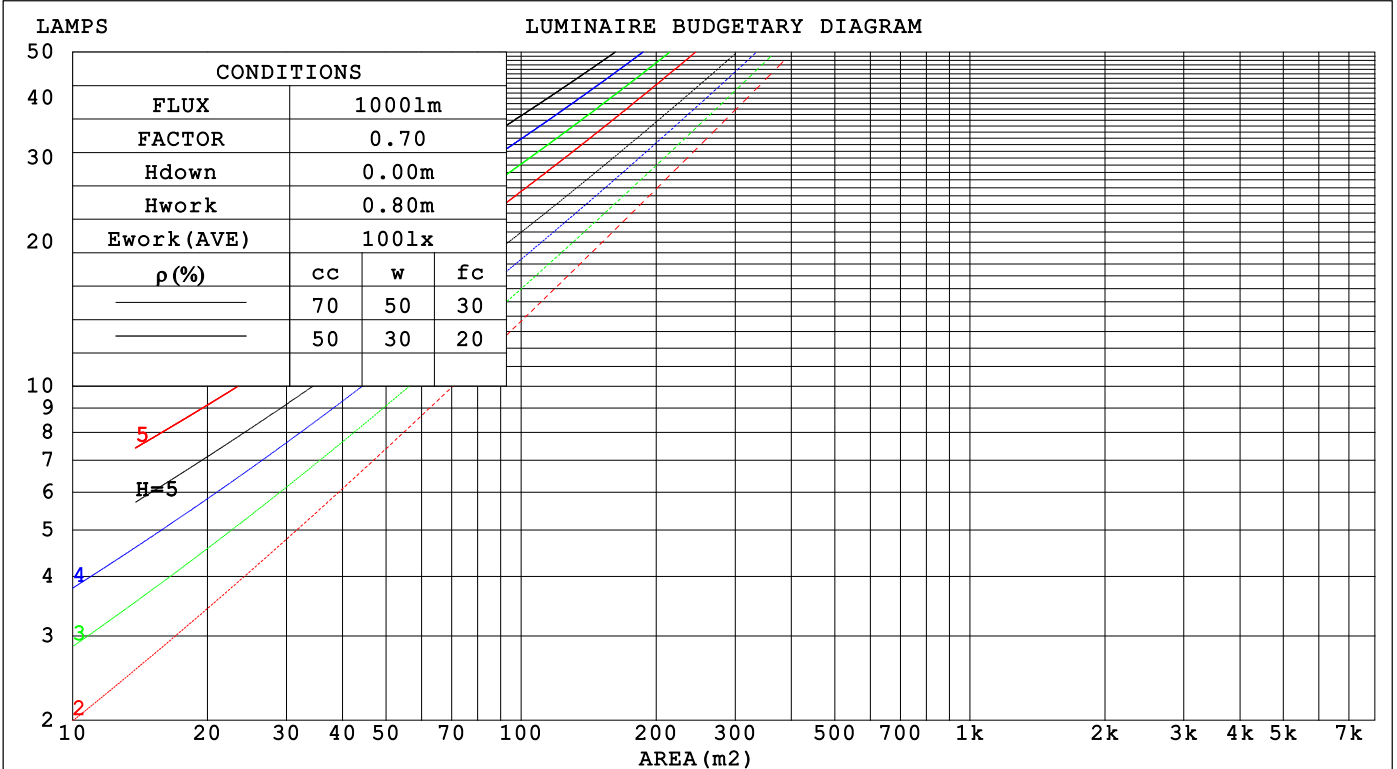
C Range: 0 - 360DEG  
 C Interval: 22.5DEG  
 Test Speed: HIGH  
 Temperature:24.3°C  
 Operators:  
 Test Date:2024-01-24

γ Range: 0 - 90DEG  
 γ Interval: 1.0DEG  
 Test System:EVERFINE GO-SPEX500\_V1 SYSTEM V2.00.460  
 Humidity:65.0%  
 Test Distance:3.080m [K=1.0000]  
 Remarks:

**CU AND LUMINAIRE BUDGETARY ESTIMATE DIAGRAM**

Test:U:119.69V I:0.1191A P:14.017W PF:0.9828 Freq:59.98Hz		
UTHdi:0.00% ITHdi:0.00% KDisp:0 Lamp Flux:1096.46x1 lm		
NAME: DL-FR-5CCT-6-WH	TYPE:	WEIGHT:
SPEC.: 5000K 90	DIM.:	SERIAL No.:
MFR.: MAGICLITE	SUR.:	Shielding Angle:

pcc	80%			70%			50%			30%			10%			0
pw	50%	30%	10%	50%	30%	10%	50%	30%	10%	50%	30%	10%	50%	30%	10%	0
pfc	20%			20%			20%			20%			20%			0
RCR	RCR:Room Cavity Ratio															
	Coefficients of Utilization(CU)															
0.0	1.19	1.19	1.19	1.16	1.16	1.16	1.11	1.11	1.11	1.06	1.06	1.06	1.02	1.02	1.02	1.00
1.0	1.04	.00	.96	1.02	.98	.94	.97	.94	.91	.94	.91	.88	.90	.88	.86	.84
2.0	.91	.84	.78	.89	.82	.77	.85	.80	.75	.82	.77	.74	.79	.75	.72	.70
3.0	.80	.71	.65	.78	.70	.64	.75	.68	.63	.72	.67	.62	.70	.65	.61	.59
4.0	.70	.62	.55	.69	.61	.54	.67	.59	.54	.64	.58	.53	.62	.57	.52	.50
5.0	.63	.54	.47	.62	.53	.47	.60	.52	.46	.58	.51	.46	.56	.50	.45	.43
6.0	.57	.48	.41	.56	.47	.41	.54	.46	.41	.52	.45	.40	.51	.45	.40	.38
7.0	.51	.43	.36	.51	.42	.36	.49	.41	.36	.48	.41	.36	.46	.40	.35	.33
8.0	.47	.38	.33	.46	.38	.32	.45	.37	.32	.44	.37	.32	.42	.36	.32	.30
9.0	.43	.35	.29	.42	.35	.29	.41	.34	.29	.40	.34	.29	.39	.33	.29	.27
10.0	.40	.32	.27	.39	.32	.26	.38	.31	.26	.37	.31	.26	.36	.30	.26	.24



C Range: 0 - 360DEG  
 C Interval: 22.5DEG  
 Test Speed: HIGH  
 Temperature:24.3°C  
 Operators:  
 Test Date:2024-01-24

γ Range: 0 - 90DEG  
 γ Interval: 1.0DEG  
 Test System:EVERFINE GO-SPEX500\_V1 SYSTEM V2.00.460  
 Humidity:65.0%  
 Test Distance:3.080m [K=1.0000]  
 Remarks:

**WEC AND CCEC**

Test:U:119.69V I:0.1191A P:14.017W PF:0.9828 Freq:59.98Hz		
UTHDi:0.00% ITHDi:0.00% KDisp:0 Lamp Flux:1096.46x1 lm		
NAME: DL-FR-5CCT-6-WH	TYPE:	WEIGHT:
SPEC.: 5000K 90	DIM.:	SERIAL No.:
MFR.: MAGICLITE	SUR.:	Shielding Angle:

$\rho_{CC}$	80%			70%			50%			30%			10%			0
$\rho_w$	50%	30%	10%	50%	30%	10%	50%	30%	10%	50%	30%	10%	50%	30%	10%	0
$\rho_{fc}$	20%			20%			20%			20%			20%			0
RCR	RCR:Room Cavity Ratio						Wall Exitance Coefficients(WEC)									
0.0																
1.0	.308	.175	.056	.301	.172	.055	.288	.165	.053	.276	.159	.051	.264	.153	.049	
2.0	.291	.159	.049	.284	.157	.048	.273	.152	.047	.262	.147	.046	.252	.142	.045	
3.0	.269	.143	.043	.264	.141	.042	.253	.137	.042	.244	.134	.041	.235	.130	.040	
4.0	.248	.129	.038	.244	.127	.038	.234	.124	.037	.226	.121	.037	.218	.118	.036	
5.0	.230	.117	.034	.225	.116	.034	.217	.113	.033	.210	.111	.033	.203	.108	.033	
6.0	.213	.107	.031	.209	.106	.030	.202	.104	.030	.195	.101	.030	.189	.099	.030	
7.0	.198	.098	.028	.195	.097	.028	.188	.095	.027	.182	.093	.027	.177	.092	.027	
8.0	.185	.091	.025	.182	.090	.025	.176	.088	.025	.171	.087	.025	.166	.085	.025	
9.0	.174	.084	.023	.171	.083	.023	.166	.082	.023	.161	.081	.023	.156	.079	.023	
10.0	.163	.078	.022	.161	.078	.022	.156	.076	.022	.152	.075	.021	.147	.074	.021	

$\rho_{CC}$	80%			70%			50%			30%			10%			0
$\rho_w$	50%	30%	10%	50%	30%	10%	50%	30%	10%	50%	30%	10%	50%	30%	10%	0
$\rho_{fc}$	20%			20%			20%			20%			20%			0
RCR	RCR:Room Cavity Ratio						Ceiling Cavity Exitance Coefficients(CCEC)									
0.0																
1.0	.190	.190	.190	.163	.163	.163	.111	.111	.111	.064	.064	.064	.020	.020	.020	
2.0	.172	.132	.098	.147	.114	.085	.101	.079	.059	.058	.046	.035	.019	.015	.011	
3.0	.164	.114	.074	.141	.099	.065	.097	.068	.045	.056	.040	.027	.018	.013	.009	
4.0	.157	.101	.058	.134	.087	.051	.092	.061	.036	.053	.036	.021	.017	.012	.007	
5.0	.149	.091	.047	.128	.078	.041	.088	.055	.029	.051	.032	.017	.016	.010	.006	
6.0	.142	.082	.039	.122	.071	.034	.084	.050	.024	.049	.029	.014	.016	.010	.005	
7.0	.135	.075	.033	.116	.065	.029	.080	.046	.021	.047	.027	.012	.015	.009	.004	
8.0	.129	.069	.029	.111	.060	.025	.077	.042	.018	.045	.025	.011	.014	.008	.004	
9.0	.123	.065	.025	.106	.056	.022	.073	.039	.016	.043	.023	.009	.014	.008	.003	
10.0	.117	.060	.022	.101	.052	.020	.070	.037	.014	.041	.022	.008	.013	.007	.003	

C Range: 0 - 360DEG  
 C Interval: 22.5DEG  
 Test Speed: HIGH  
 Temperature:24.3°C  
 Operators:  
 Test Date:2024-01-24

$\gamma$  Range: 0 - 90DEG  
 $\gamma$  Interval: 1.0DEG  
 Test System:EVERFINE GO-SPEX500\_V1 SYSTEM V2.00.460  
 Humidity:65.0%  
 Test Distance:3.080m [K=1.0000]  
 Remarks:

**UGR(Unified Glare Rating) Table**

Test:U:119.69V I:0.1191A P:14.017W PF:0.9828 Freq:59.98Hz UTHDi:0.00% ITHDi:0.00% KDisp:0 Lamp Flux:1096.46x1 lm										
NAME: DL-FR-5CCT-6-WH					TYPE:			WEIGHT:		
SPEC.: 5000K 90					DIM.:			SERIAL No.:		
MFR.: MAGICLITE					SUR.:			Shielding Angle:		
ceiling/cavity	0.7	0.7	0.5	0.5	0.3	0.7	0.7	0.5	0.5	0.3
walls	0.5	0.3	0.5	0.3	0.3	0.5	0.3	0.5	0.3	0.3
working plane	0.2	0.2	0.2	0.2	0.2	0.2	0.2	0.2	0.2	0.2
Room dimensions	Viewed crosswise					Viewed endwise				
x = 2H y = 2H	16.4	17.9	16.7	18.1	18.3	16.5	18.0	16.8	18.2	18.5
3H	17.9	19.3	18.2	19.5	19.8	18.1	19.5	18.3	19.7	19.9
4H	18.5	19.8	18.8	20.1	20.3	18.7	20.0	19.0	20.3	20.5
6H	18.9	20.1	19.2	20.4	20.7	19.1	20.4	19.5	20.7	21.0
8H	19.0	20.2	19.3	20.5	20.8	19.3	20.5	19.6	20.8	21.1
12H	19.0	20.2	19.4	20.5	20.8	19.4	20.6	19.8	20.9	21.2
4H 2H	17.0	18.4	17.3	18.6	18.9	17.1	18.5	17.4	18.7	19.0
3H	18.7	19.9	19.1	20.2	20.5	18.8	20.0	19.2	20.3	20.6
4H	19.4	20.5	19.8	20.8	21.2	19.6	20.7	20.0	21.0	21.3
6H	19.9	20.9	20.3	21.2	21.6	20.2	21.1	20.6	21.5	21.9
8H	20.1	21.0	20.5	21.3	21.7	20.4	21.3	20.8	21.7	22.0
12H	20.1	21.0	20.6	21.3	21.7	20.6	21.4	21.0	21.8	22.2
8H 4H	19.7	20.6	20.1	21.0	21.3	19.9	20.7	20.3	21.1	21.5
6H	20.4	21.1	20.8	21.5	21.9	20.6	21.3	21.1	21.7	22.2
8H	20.6	21.2	21.0	21.7	22.1	20.9	21.6	21.4	22.0	22.4
12H	20.7	21.2	21.2	21.7	22.2	21.1	21.7	21.6	22.2	22.6
12H 4H	19.7	20.5	20.2	20.9	21.3	19.9	20.7	20.3	21.1	21.5
6H	20.4	21.1	20.9	21.5	22.0	20.7	21.3	21.1	21.7	22.2
8H	20.7	21.2	21.2	21.7	22.2	21.0	21.6	21.5	22.0	22.5
Variations with the observer position at spacings(CIE Pub.117):										
S = 1.0H	+ 0.2 / - 0.2					+ 0.2 / - 0.2				
1.5H	+ 0.2 / - 0.3					+ 0.2 / - 0.3				
2.0H	+ 0.2 / - 0.3					+ 0.2 / - 0.3				

CIE Pub.117, 1096 lm Total Lamp Luminous Flux Correct (8log(F/F0) = 0.3)  
 Area: 0.111111 m2

C Range: 0 - 360DEG  
 C Interval: 22.5DEG  
 Test Speed: HIGH  
 Temperature:24.3°C  
 Operators:  
 Test Date:2024-01-24

γ Range: 0 - 90DEG  
 γ Interval: 1.0DEG  
 Test System:EVERFINE GO-SPEX500\_V1 SYSTEM V2.00.460  
 Humidity:65.0%  
 Test Distance:3.080m [K=1.0000]  
 Remarks:

**UTILIZATION FACTORS TABLE**

Test:U:119.69V I:0.1191A P:14.017W PF:0.9828 Freq:59.98Hz UTHDi:0.00% ITHDi:0.00% KDisp:0 Lamp Flux:1096.46x1 lm		
NAME: DL-FR-5CCT-6-WH	TYPE:	WEIGHT:
SPEC.: 5000K 90	DIM.:	SERIAL No.:
MFR.: MAGICLITE	SUR.:	Shielding Angle:

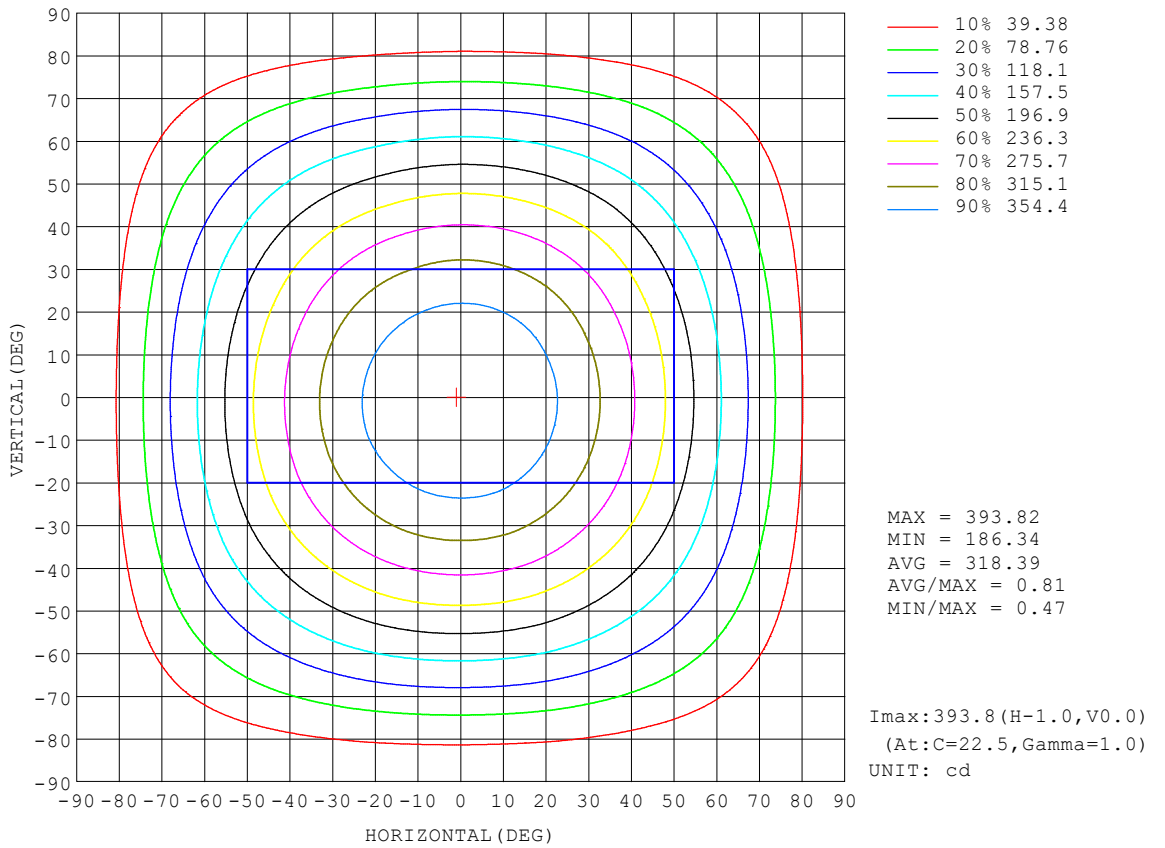
REFLECTANCE										
Ceiling	0.8	0.8	0.8	0.7	0.7	0.7	0.5	0.5	0.5	0
Walls	0.7	0.5	0.3	0.7	0.5	0.3	0.7	0.5	0.3	0
Working plane	0.2	0.2	0.2	0.2	0.2	0.2	0.2	0.2	0.2	0
ROOM INDEX	UTILIZATION FACTORS (PERCENT) $k(RI) \times RCR = 5$									
$k = 0.60$	58	46	39	57	46	39	56	45	39	33
0.80	68	56	49	67	56	49	65	55	48	41
1.00	76	65	58	75	65	58	73	66	57	50
1.25	83	73	66	82	72	65	79	71	64	57
1.50	88	78	71	87	78	71	84	76	70	62
2.00	95	87	80	93	85	79	90	83	78	70
2.50	99	91	85	97	90	84	93	87	82	74
3.00	102	95	90	100	94	89	96	91	87	78
4.00	106	101	96	104	99	95	100	96	92	83
5.00	109	104	100	106	102	98	102	98	95	86
ROOM INDEX	UF(total)									Direct
According to DIN EN 13032-2 2004			Suspended				SHRNOM = 1.25			

C Range: 0 - 360DEG  
 C Interval: 22.5DEG  
 Test Speed: HIGH  
 Temperature: 24.3 °C  
 Operators:  
 Test Date: 2024-01-24

$\gamma$  Range: 0 - 90DEG  
 $\gamma$  Interval: 1.0DEG  
 Test System: EVERFINE GO-SPEX500\_V1 SYSTEM V2.00.460  
 Humidity: 65.0%  
 Test Distance: 3.080m [K=1.0000]  
 Remarks:

**ISOCANDELA DIAGRAM**

Test:U:119.69V I:0.1191A P:14.017W PF:0.9828 Freq:59.98Hz UTHDi:0.00% ITHDi:0.00% KDisp:0 Lamp Flux:1096.46x1 lm		
NAME: DL-FR-5CCT-6-WH	TYPE:	WEIGHT:
SPEC.: 5000K 90	DIM.:	SERIAL No.:
MFR.: MAGICLITE	SUR.:	Shielding Angle:



C Range: 0 - 360DEG  
 C Interval: 22.5DEG  
 Test Speed: HIGH  
 Temperature: 24.3 °C  
 Operators:  
 Test Date: 2024-01-24

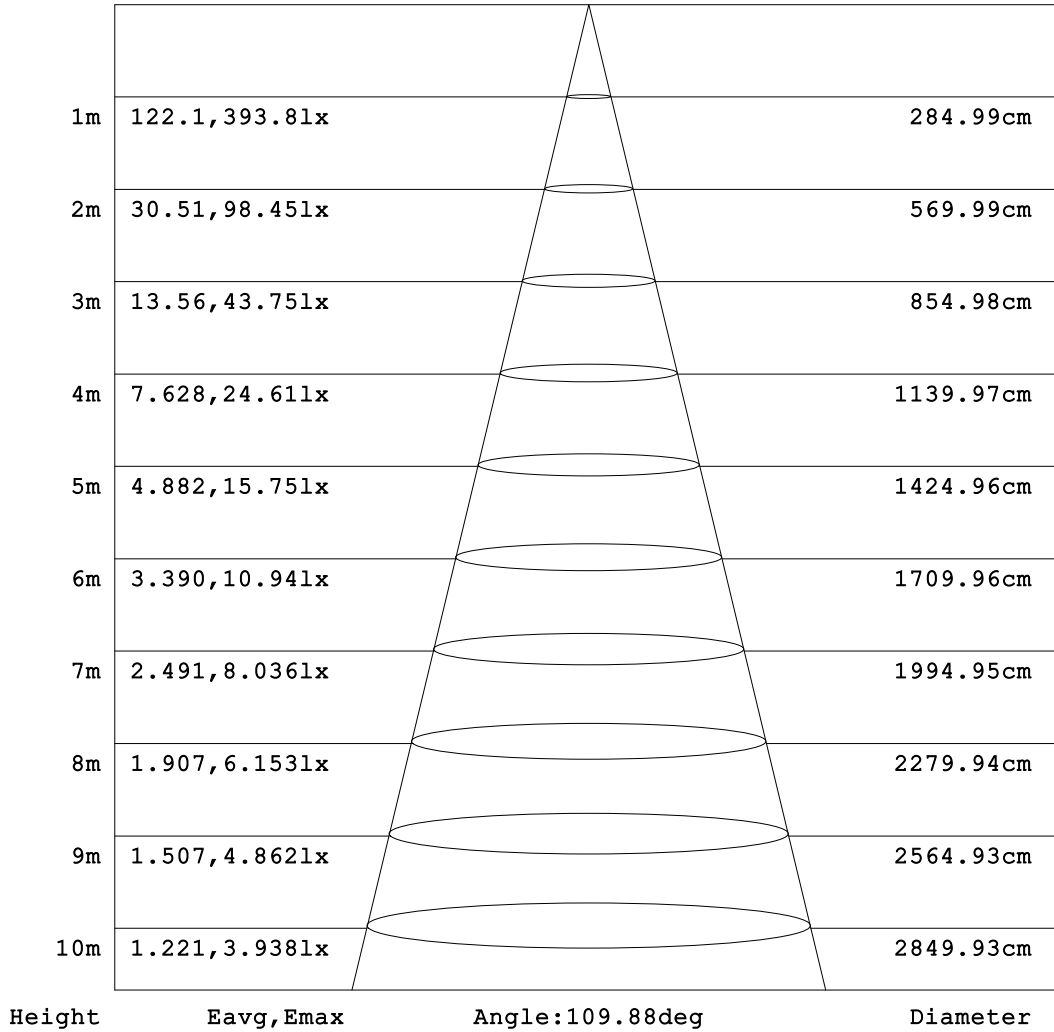
γ Range: 0 - 90DEG  
 γ Interval: 1.0DEG  
 Test System: EVERFINE GO-SPEX500\_V1 SYSTEM V2.00.460  
 Humidity: 65.0%  
 Test Distance: 3.080m [K=1.0000]  
 Remarks:



**AAI Figure**

Test:U:119.69V I:0.1191A P:14.017W PF:0.9828 Freq:59.98Hz UTHDi:0.00% ITHDi:0.00% KDisp:0 Lamp Flux:1096.46x1 lm		
NAME: DL-FR-5CCT-6-WH	TYPE:	WEIGHT:
SPEC.: 5000K 90	DIM.:	SERIAL No.:
MFR.: MAGICLITE	SUR.:	Shielding Angle:

Flux out:782.1 lm



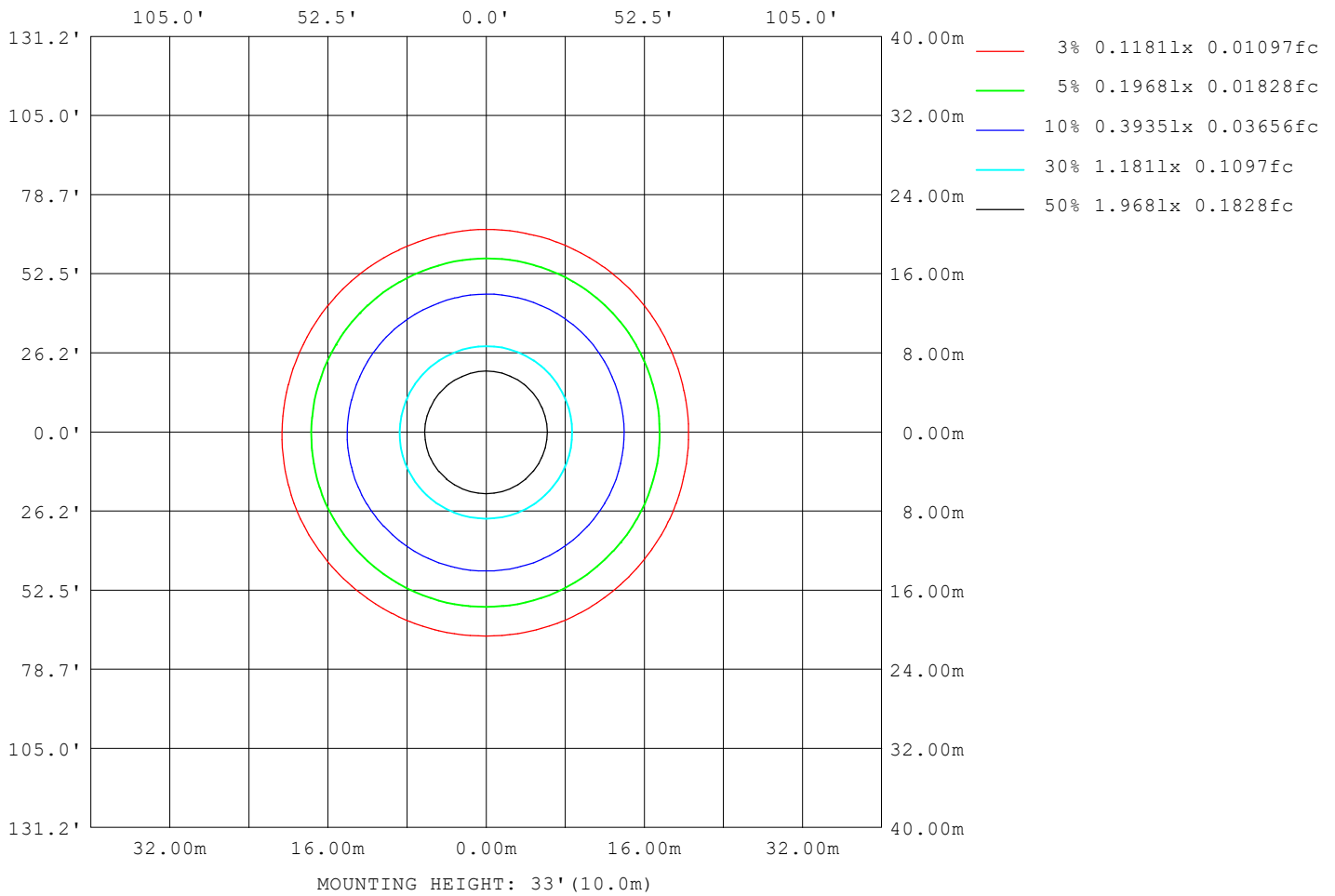
Note: The Curves indicate the illuminated area and the average illumination when the luminaire is at different distance.

C Range: 0 - 360DEG  
 C Interval: 22.5DEG  
 Test Speed: HIGH  
 Temperature: 24.3 °C  
 Operators:  
 Test Date: 2024-01-24

γ Range: 0 - 90DEG  
 γ Interval: 1.0DEG  
 Test System: EVERFINE GO-SPEX500\_V1 SYSTEM V2.00.460  
 Humidity: 65.0%  
 Test Distance: 3.080m [K=1.0000]  
 Remarks:

**ISOLUX DIAGRAM**

Test:U:119.69V I:0.1191A P:14.017W PF:0.9828 Freq:59.98Hz UTHDi:0.00% ITHDi:0.00% KDisp:0 Lamp Flux:1096.46x1 lm		
NAME: DL-FR-5CCT-6-WH	TYPE:	WEIGHT:
SPEC.: 5000K 90	DIM.:	SERIAL No.:
MFR.: MAGICLITE	SUR.:	Shielding Angle:



C Range: 0 - 360DEG  
 C Interval: 22.5DEG  
 Test Speed: HIGH  
 Temperature:24.3°C  
 Operators:  
 Test Date:2024-01-24

γ Range: 0 - 90DEG  
 γ Interval: 1.0DEG  
 Test System:EVERFINE GO-SPEX500\_V1 SYSTEM V2.00.460  
 Humidity:65.0%  
 Test Distance:3.080m [K=1.0000]  
 Remarks:

**LED Avg.L Report**

Test:U:119.69V I:0.1191A P:14.017W PF:0.9828 Freq:59.98Hz UTHDi:0.00% ITHDi:0.00% KDisp:0 Lamp Flux:1096.46x1 lm		
NAME: DL-FR-5CCT-6-WH	TYPE:	WEIGHT:
SPEC.: 5000K 90	DIM.:	SERIAL No.:
MFR.: MAGICLITE	SUR.:	Shielding Angle:

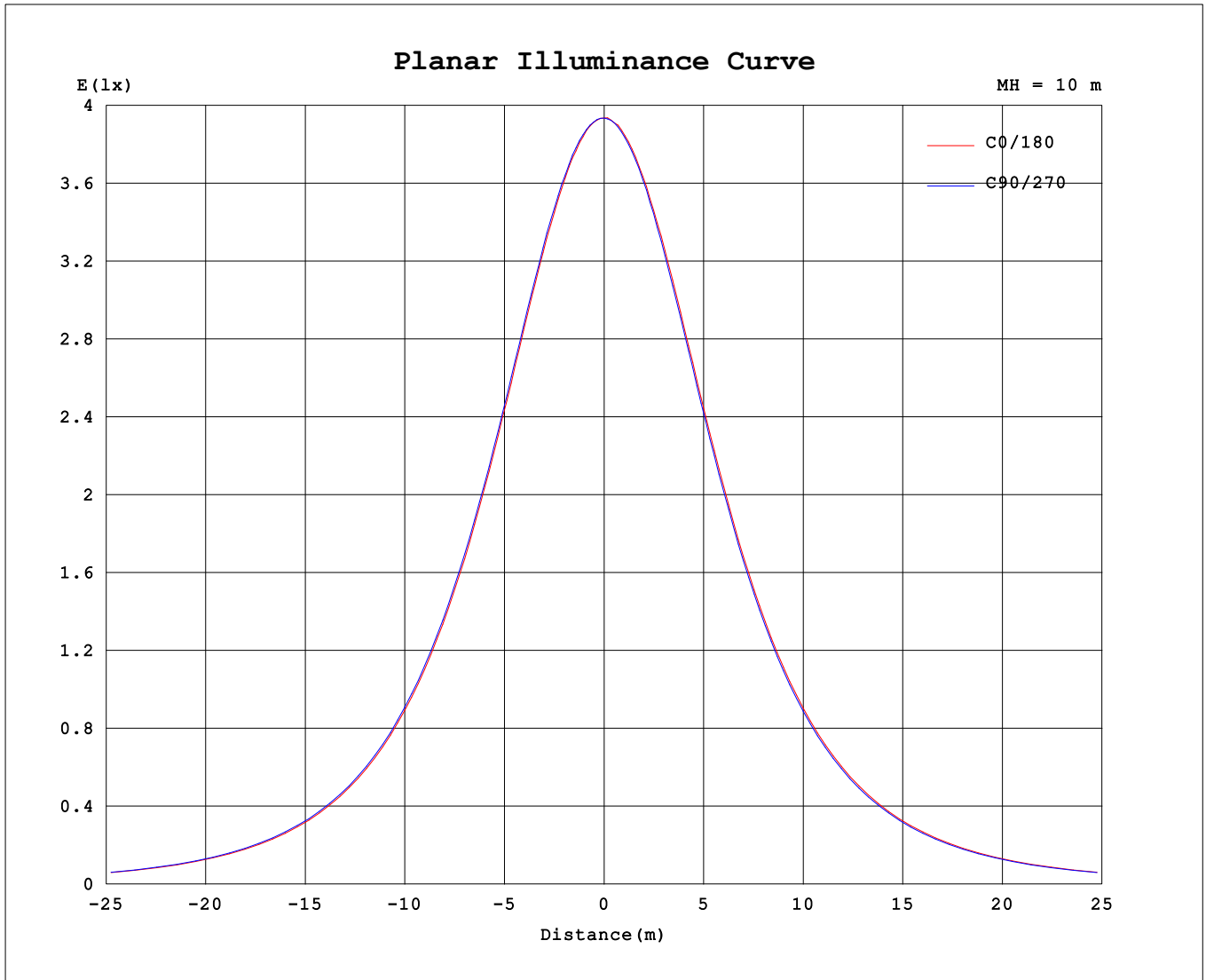
AvgL	cd/m2
L_0~180 (65) av	2875
L_0~180 (75) av	2531
L_0~180 (85) av	1346
L_90~270 (65) av	2874
L_90~270 (75) av	2571
L_90~270 (85) av	2100
L_45 (65) av	2873
L_45 (75) av	2563
L_45 (85) av	1659

Standard: GB/T 29293-2012

C Range: 0 - 360DEG  
 C Interval: 22.5DEG  
 Test Speed: HIGH  
 Temperature:24.3℃  
 Operators:  
 Test Date:2024-01-24

γ Range: 0 - 90DEG  
 γ Interval: 1.0DEG  
 Test System:EVERFINE GO-SPEX500\_V1 SYSTEM V2.00.460  
 Humidity:65.0%  
 Test Distance:3.080m [K=1.0000]  
 Remarks:

**Planar Illuminance Curve**



C Range: 0 - 360DEG  
 C Interval: 22.5DEG  
 Test Speed: HIGH  
 Temperature: 24.3 °C  
 Operators:  
 Test Date: 2024-01-24

γ Range: 0 - 90DEG  
 γ Interval: 1.0DEG  
 Test System: EVERFINE GO-SPEX500\_V1 SYSTEM V2.00.460  
 Humidity: 65.0%  
 Test Distance: 3.080m [K=1.0000]  
 Remarks:

