

DESCRIPTION

This manual is for NSL's outdoor rated Tunable CCT LED Strip Lights. Designed specifically for your Indoor and outdoor lighting needs. The LED strip is widely used in homes, offices, and commercial spaces. With flexible installation options and a variety of color temperature choices, it offers users an efficient, energy-saving, and long-lasting lighting solution.

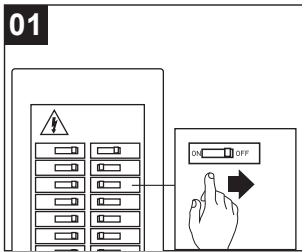
APPLICATIONS

- Aisle and stairway lighting
- Cabinet and Cove lighting
- Deck and patio lighting
- Pathway lighting
- Building facades and outlines
- Back lighting
- Showcase lighting
- Linear decorative lighting

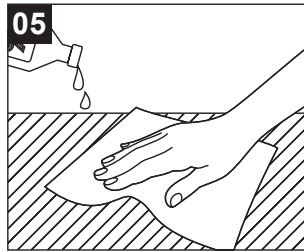
SPECIFICATIONS

Product Code	SL-OD-CCT series
Input Voltage:	DC24V
CCT:	Tunable CCT (27k to 65k)
Operating Temperature:	(-20°C~40°C)
Beam angle:	150°
IP Grade:	IP65
Warranty:	5 years
LED tests:	LM80
CRI:	CRI>90

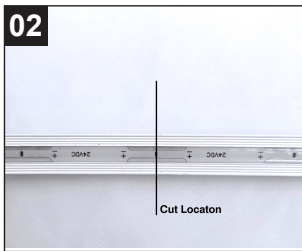
STEPS FOR INSTALLATION



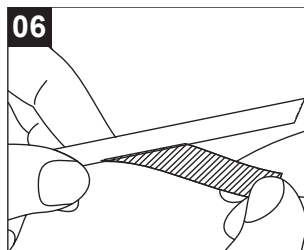
Before installing, please turn off the power supply to the circuit in use.



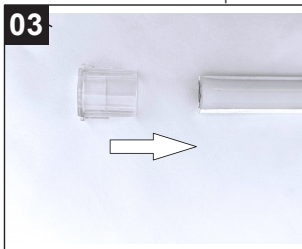
Clean the installation surface and make sure the surface to be installed is smooth and free of any dust or oil stains.



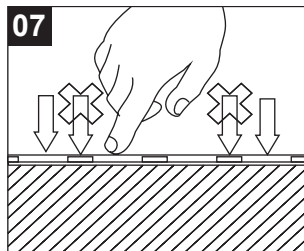
Measure the length of the surface where the LED strip is to be installed and cut on the closet cut location with sharp scissors.



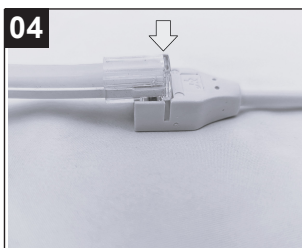
Gently pull off the centrifugal paper of the double-sided adhesive on the back of the LED strip, and stick the light strip to the surface where it needs to be installed.



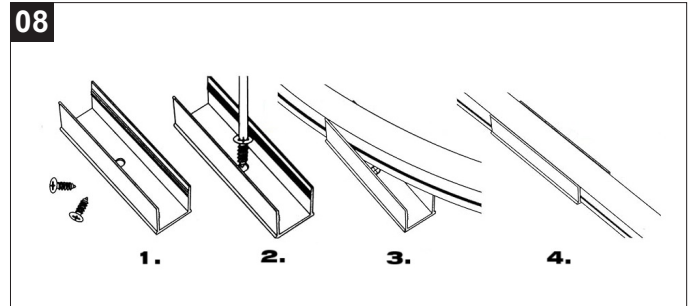
Slide the Clear Plastic piece over the cut end. Be sure to remove the double sided tape when the cap will sit. Use NFLX-GLUE (or silicone) to fill the plug where waterproofing is required.



Do not tear off all the centrifugal paper at once. You need to peel and stick it at the same time, and gently press both sides of the PCB to ensure a firm adhesion. Be careful not to press on the LED and other components on the mounting surface .



Insert the clear cap into the end of the accessory as shown above. Press firmly until it clicks. Please note polarity and connect correctly prior to installation.

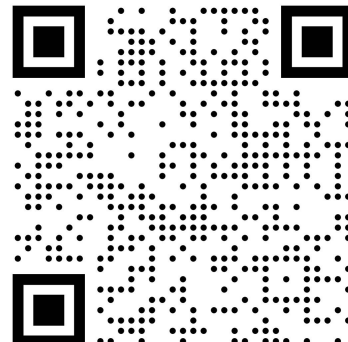


NOTE: For porous surfaces that will not allow a firm grip with the self adhesive backing, we recommend that you use our U channel (SL-OD-MC) or extrusion (SL-OD-EX-39). Scan QR Code below for more information on other extrusion options.

! WARNING

- Pay attention to the input voltage of the LED strip and do not exceed this voltage.
- **NOTE:** The total power of the LED strip cannot be greater than the power supply power (preferably less than 85% of the power supply power).
- **NOTE:** Please disconnect the circuit first when connecting the light strip.
- **NOTE:** In outdoor situations, Power supplies, controllers and repeaters must be placed in weather proof enclosures.

For more information on extrusions, accessories or specific LED products please use the QR code below.



CONTROL OF TUNABLE CCT LED STRIP

NOTE: As the Streamline Series tunable CCT product is powered by class 2, 24V power supplies, you will need one power supply and one controller (CNTRL-2W-CCT) for the first run of LED strip. You can run 2 lengths of this product from one controller. (MAX 10AMPS@24V)

1. Connect power feed from the strip light to the output side of the controller (CNTRL-2W-CCT) as shown below. (push dimming is optional)

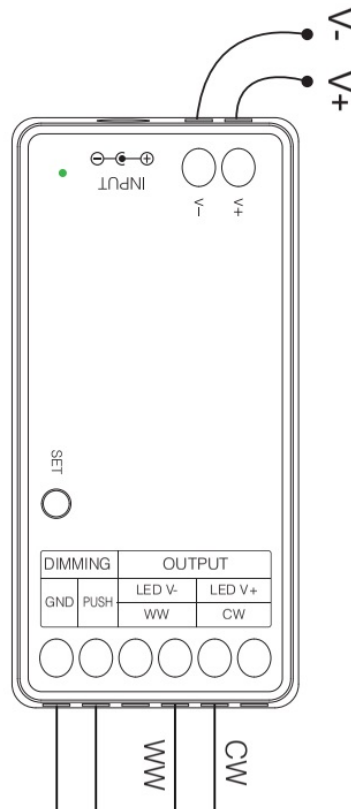
2. Connect output side of driver to "POWER+/-" on the input side of the controller. See above. Ensure appropriate size of 24V power supply from list of approved power supplies.

NOTE: Use only non-dimmable power supplies for color change applications.

3. Connect line voltage side of power supply to line voltage.

NOTE: Line voltage connections should be carried out by a qualified electrician.

For Installations with multiple lengths of CCT LED strip, (more than 2) you will need additional Controllers. The CCT remotes, CNTRL-4Z-CCT-RWP-Y and CNTRL-4Z-CCT-RM can connect multiple Controllers. (12 Max)



WARNING AND CAUTIONS

- Do not operate with the flexible light tightly coiled.
- During installation, make sure flexible light isn't receiving electricity in any manner.
- Make sure the voltage marked on your light strip matches the power supply.
- Do not overlap this product as the overlapping may cause the flexible light to overheat and melt or ignite.
- Do not puncture, cut, shorten, or splice the flexible lighting.
- Do not route flexible lighting through walls, doors, windows or any like part of the building structure. See wiring diagrams for remote power source installations.
- Do not use if there is any damage to the light or cord insulation. Inspect periodically.
- Do not submerge flexible light in liquids, or use the product in the vicinity of standing water or other liquids. Keep all parts of LED strip installation at least 10 feet (305cm) from any swimming or decorative pool. Secure this flexible light using only the hangers or clips provided.
- Do not secure this product or its cord with staples, nails, or like means that may damage the insulation.
Do not subject flexible lighting to continuous flexing.
Do not exceed the length in feet permitted by the marking.
Make sure to disconnect the power before adding segments.
- Only use extension segments provided with the entire set of product.
- To preclude the entry of water, make sure that all connections between section segments are secure.
- Do not bend the LED strip in the horizontal plane at all. Maintain a minimum 2" (5.1cm) radius in the vertical plane.
- Do not subject flexible light to over 15 lbs. of tensile force.
- When connecting the flexible light with connectors, step cord, and the power supply (LED driver), make sure the polarity markings are correctly matched.
- When using outdoor use portable lighting products, basic safety precautions should always be followed to reduce the risk of fire, electric shock, and personal injury, including the following:
 - Ground Fault Circuit Interrupter (GFCI) protection should be provided on the circuits or outlet to be used for the outdoor use of flexible lighting product. Receptacles are available having built-in GFCI protection for this measure of safety.
 - Use only listed outdoor extension cord from 110VAC source to LED Driver, such as type SW, SOW, STW, STOW, SJW, SJOW, SJTW, or SJTOW. This designation is marked on the wire of the extension cord.