

Extrusions

These are designed to house and protect LED strip lights, enhancing durability and providing a sleek, professional finish. They also help to diffuse light evenly, preventing hotspots and creating a more aesthetically pleasing lighting effect.

LV-ALP2208 | LV-ALP2208-BK

Surface mount aluminium extrusion and frosted PC cover



Product Codes

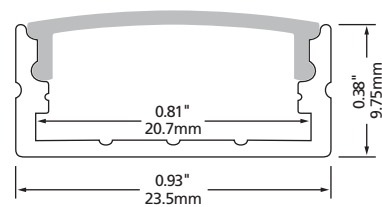
- LV-ALP2208
- LV-ALP2208-2M
- LV-ALP2208-BK (Black Color)

End Caps

- LV-ALP2208-EC (2/bag)
- LV-ALP2208-EC-WF (2/bag)

Mounting Clips

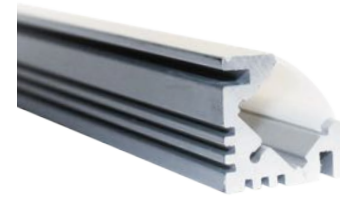
- LV-ALP2208-MC (2/bag)



NOTE: Available in 1m (39") and 2m (78") lengths.

LV-LB-V3-FR

Corner surface mounted aluminum extrusion and frosted PC cover



Product Code

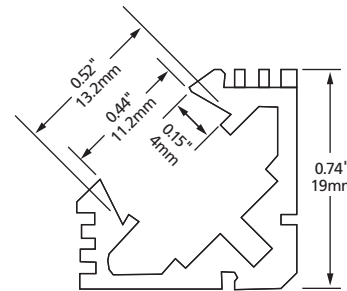
- LV-LB-V3-FR

End Caps

- LV-V1/V3-EC (2/bag)
- LV-V1/V3-EC-WF (2/bag)

Mounting Clips

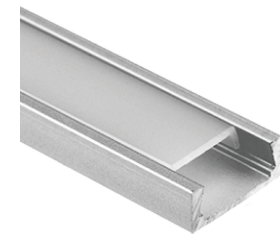
- LV-V1/V3-MC (6/bag)



NOTE: Available in 1m (39") length.

LV-ALP007 | LV-ALP007-BK

Surface mount aluminium extrusion and frosted PC cover



Product Codes

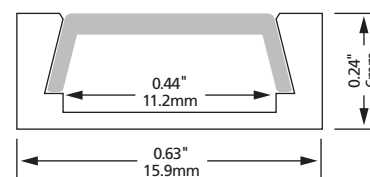
- LV-ALP007
- LV-ALP007-2M
- LV-ALP007-BK (Black Color)

End Caps

- LV-ALP007-EC (2/bag)
- LV-ALP007-EC-WF (2/bag)

Mounting Clips

- LV-ALP007-MC (6/bag)



NOTE: Available in 1m (39") and 2m (78") lengths.

LV-RD54

Surface mount aluminum extrusion



Product Codes

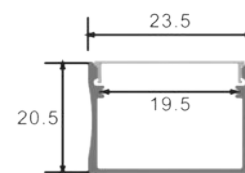
- LV-RD54-1M
- LV-RD54-2M

End Caps

- LV-RD54/55-EC (2/bag)
- LV-RD54/55-EC-WF (2/bag)

Mounting Clips

- LV-RD54/55-EC-MC (6/bag)



NOTE: Available in 1m (39") and 2m (78") lengths.

LV-RD55

Recessed aluminum extrusion



Product Codes

- LV-RD55-1M
- LV-RD55-2M

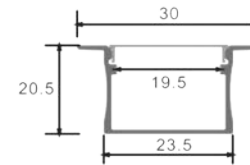
End Caps

- LV-RD54/55-EC (2/bag)

- LV-RD54/55-EC-WF (2/bag)

Mounting Clips

- LV-RD54/55-EC-MC (6/bag)



NOTE: Available in 1m (39") and 2m (78") lengths.

LV-ALP2908

Recessed aluminum extrusion and frosted PC



Product Codes

- LV-ALP2908
- LV-ALP2908-2M

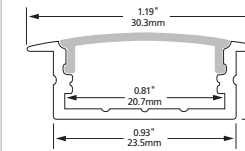
End Caps

- LV-ALP2908-EC (2/bag)

- LV-ALP2908-EC-WF (2/bag)

Mounting Clips

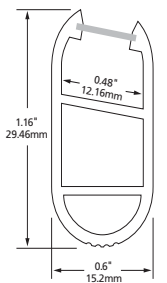
- LV-ALP2908-MC (2/bag)



NOTE: Available in 1m (39") and 2m (78") lengths.

LV-1401

Closet aluminum extrusion with mounting brackets and frosted PC cover



NOTE: 1m (39") extrusion ships complete with two mounting end caps

LV-PC-TO

Tape-Over Lens

A low-profile arched clear or frosted lens that provides an economical protective shield while minimizing diode imaging.

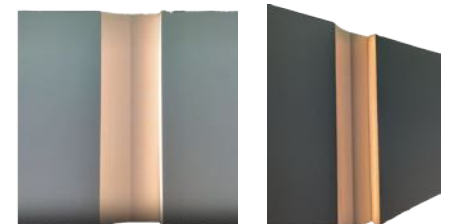


NOTE: Available in 1m (39") length.

Dry Wall Extrusions

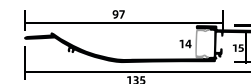
For indirect lighting applications.

Mud in extrusions for low-voltage linear lighting provide a seamless, trimless finish by embedding fixtures directly into walls or ceilings. This clean, modern solution creates smooth, continuous lines of light, perfect for minimalist designs.



MIX-01-16.6-2.5M (End caps included)

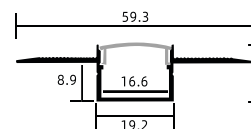
19mm x 13mm Mud in Extrusion, Aluminum, 1 Flange, Silver, 2.5M (95.25")



NOTE: Intended for cove or base illumination.

MIX-02-16.6-2.5M (End caps included)

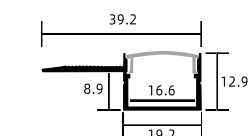
19mm x 13mm Mud in Extrusion, Aluminum, 2 Flange, Silver, 2.5M (95.25")



NOTE: Intended for in-wall or in-ceiling details.

MIX-03-14-2.5M (End caps included)

135mm x 19mm Mud in Extrusion, Aluminum, 2 Flange, White, 2.5M (95.25")



NOTE: Intended for use along millwork.

SL-OD-EX-39

1m Solid Mounting Extrusion

NOTE: To be used with Streamline CCT Outdoor.



SL-RGBW-EX-39

1m Solid Mounting Extrusion

NOTE: To be used with Streamline RGBW Outdoor.

