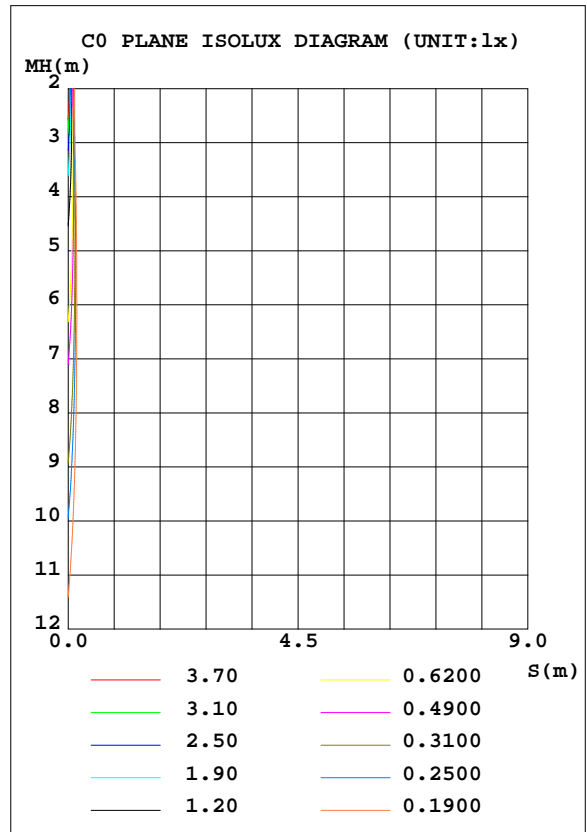
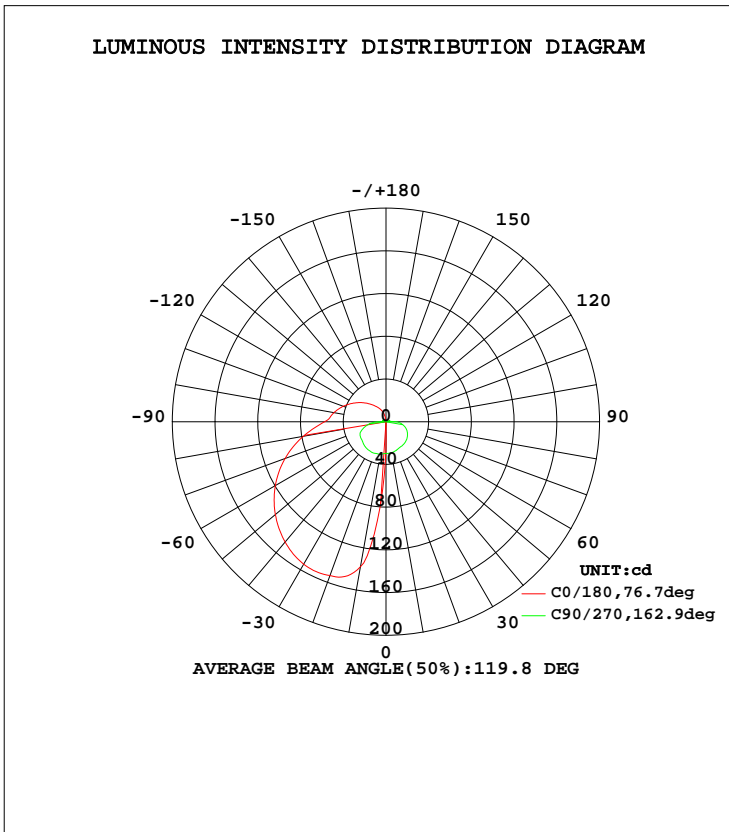


LUMINAIRE PHOTOMETRIC TEST REPORT

Test:U:120.6V I:0.1850A P:10.50W PF:0.4709 Lamp Flux:316.817x1 lm		
NAME: MIX-03-14-2.5M 3000K	TYPE:	WEIGHT:
SPEC.:	DIM.:	SERIAL No.:
MFR.:	SUR.:	PROTECTION ANGLE:

DATA OF LAMP		PHOTOMETRIC DATA Eff: 30.17 lm/W			
MODEL	MIX-03-14-2.5M	I _{max} (cd)	154.9	S/MH(C0/180)	3.38
NOMINAL POWER(W)	120	LOR(%)	100.0	S/MH(C90/270)	1.58
RATED VOLTAGE(V)	120	TOTAL FLUX(lm)	316.82	η UP, DN(C0-180)	1.6, 11.2
NOMINAL FLUX(lm)	316.817	CIE CLASS	SEMI-D.	η UP, DN(C180-360)	17.9, 69.3
LAMPS INSIDE	1	η up(%)	19.5	CIBSE SHR NOM	0.00
TEST VOLTAGE(V)	120	η down(%)	80.5	CIBSE SHR MAX	1.00



C Range: 0 - 360DEG
 C Interval: 90.0DEG
 Test Speed: HIGH
 Temperature:25.3DEG
 Operators:
 Test Date:2024-10-12

γ Range: 0 - 180DEG
 γ Interval: 1.0DEG
 Test System:EVERFINE GO-2000A_V1 SYSTEM V2.0.285
 Humidity:65.0%
 Test Distance:7.690m [K=1.0000]
 Remarks:

ZONAL FLUX DIAGRAM

ZONAL FLUX DIAGRAM:

γ	C0	C90	C180	C270				γ	Φ zone	Φ total	Φ lum,lamp
10	0.4690	29.45	137.8	31.04				0- 10	4.059	4.059	1.28,1.28
20	0.4091	28.45	153.3	31.43				10- 20	14.87	18.93	5.98,5.98
30	0.4068	27.23	154.0	31.24				20- 30	24.77	43.70	13.8,13.8
40	0.4304	26.66	147.0	30.49				30- 40	32.86	76.56	24.2,24.2
50	0.4650	25.44	135.2	28.75				40- 50	38.23	114.8	36.2,36.2
60	0.5226	23.35	119.7	27.83				50- 60	40.54	155.3	49,49
70	0.5995	20.35	100.6	24.56				60- 70	39.55	194.9	61.5,61.5
80	0.6648	15.88	78.63	17.65				70- 80	34.33	229.2	72.3,72.3
90	0.7532	10.06	57.56	6.562				80- 90	25.83	255.0	80.5,80.5
100	0.8762	3.931	49.50	3.309				90-100	16.91	271.9	85.8,85.8
110	0.9993	2.674	42.55	2.894				100-110	14.20	286.1	90.3,90.3
120	1.053	1.287	35.08	2.457				110-120	11.02	297.2	93.8,93.8
130	1.034	1.003	27.81	2.276				120-130	8.071	305.2	96.3,96.3
140	1.011	0.8800	21.20	1.635				130-140	5.517	310.8	98.1,98.1
150	0.9993	0.7648	15.58	1.084				140-150	3.392	314.1	99.2,99.2
160	0.8460	0.6955	10.81	0.8110				150-160	1.851	316.0	99.7,99.7
170	0.7190	0.6302	4.301	0.6420				160-170	0.7303	316.7	100,100
180	0.5803	0.5842	0.5727	0.5919				170-180	0.0873	316.8	100,100
DEG	LUMINOUS INTENSITY:cd								UNIT:lm		

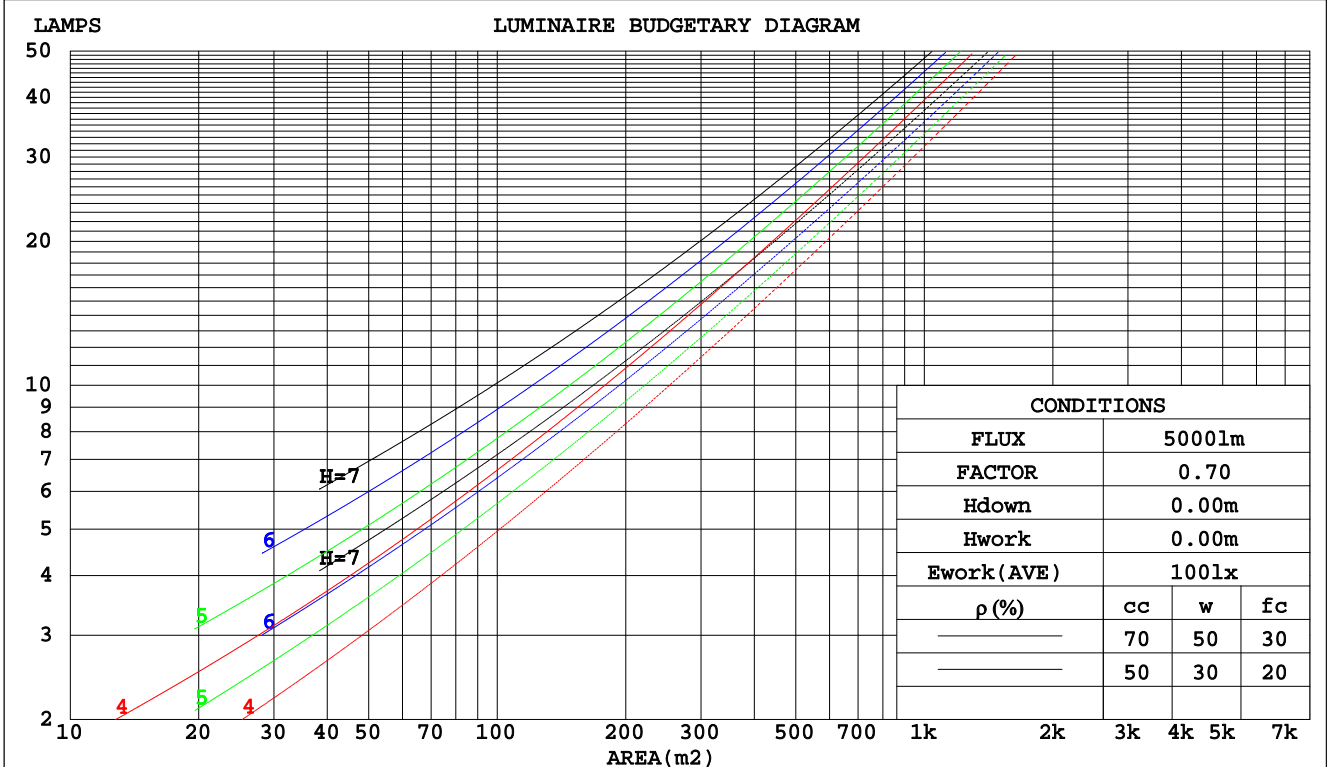
C Range: 0 - 360DEG
 C Interval: 90.0DEG
 Test Speed: HIGH
 Temperature:25.3DEG
 Operators:
 Test Date:2024-10-12

γ Range: 0 - 180DEG
 γ Interval: 1.0DEG
 Test System:EVERFINE GO-2000A_V1 SYSTEM V2.0.285
 Humidity:65.0%
 Test Distance:7.690m [K=1.0000]
 Remarks:

CU AND LUMINAIRE BUDGETARY ESTIMATE DIAGRAM

Test:U:120.6V I:0.1850A P:10.50W PF:0.4709 Lamp Flux:316.817x1 lm		
NAME: MIX-03-14-2.5M 3000K	TYPE:	WEIGHT:
SPEC.:	DIM.:	SERIAL No.:
MFR.:	SUR.:	PROTECTION ANGLE:

pcc	80%			70%			50%			30%			10%			0
	50%	30%	10%	50%	30%	10%	50%	30%	10%	50%	30%	10%	50%	30%	10%	0
pw																0
pfc	20%			20%			20%			20%			20%			0
RCR	RCR:Room Cavity Ratio Coefficients of Utilization(CU)															
0.0	1.14	1.14	1.14	1.09	1.09	1.09	1.00	1.00	1.00	.92	.92	.92	.84	.84	.84	.80
1.0	.94	.89	.84	.90	.85	.80	.82	.78	.74	.75	.71	.68	.68	.65	.63	.59
2.0	.80	.72	.65	.76	.69	.62	.69	.63	.58	.63	.58	.54	.57	.53	.50	.46
3.0	.69	.59	.52	.66	.57	.50	.60	.53	.47	.54	.48	.43	.49	.44	.40	.37
4.0	.60	.50	.43	.57	.48	.41	.52	.45	.39	.47	.41	.36	.43	.38	.33	.30
5.0	.53	.43	.36	.51	.42	.35	.46	.38	.33	.42	.36	.30	.38	.33	.28	.26
6.0	.47	.38	.31	.45	.36	.30	.41	.34	.28	.38	.31	.26	.34	.29	.24	.22
7.0	.42	.33	.27	.41	.32	.26	.37	.30	.24	.34	.28	.23	.31	.25	.21	.19
8.0	.38	.29	.23	.37	.28	.23	.34	.26	.21	.31	.25	.20	.28	.23	.19	.16
9.0	.35	.26	.21	.34	.25	.20	.31	.24	.19	.28	.22	.18	.26	.21	.17	.15
10.0	.32	.24	.18	.31	.23	.18	.28	.22	.17	.26	.20	.16	.24	.19	.15	.13



C Range: 0 - 360DEG
 C Interval: 90.0DEG
 Test Speed: HIGH
 Temperature: 25.3DEG
 Operators:
 Test Date: 2024-10-12

γ Range: 0 - 180DEG
 γ Interval: 1.0DEG
 Test System: EVERFINE GO-2000A_V1 SYSTEM V2.0.285
 Humidity: 65.0%
 Test Distance: 7.690m [K=1.0000]
 Remarks:

WEC AND CCEC

Test:U:120.6V I:0.1850A P:10.50W PF:0.4709 Lamp Flux:316.817x1 lm		
NAME: MIX-03-14-2.5M 3000K	TYPE:	WEIGHT:
SPEC.:	DIM.:	SERIAL No.:
MFR.:	SUR.:	PROTECTION ANGLE:

ρcc	80%			70%			50%			30%			10%			0
ρw	50%	30%	10%	50%	30%	10%	50%	30%	10%	50%	30%	10%	50%	30%	10%	0
ρfc	20%			20%			20%			20%			20%			0
RCR	RCR:Room Cavity Ratio						Wall Exitance Coefficients(WEC)									
0.0																
1.0	.405	.230	.073	.392	.223	.071	.367	.210	.067	.344	.198	.064	.323	.187	.060	
2.0	.348	.191	.059	.336	.185	.057	.314	.174	.054	.293	.164	.051	.274	.155	.049	
3.0	.308	.164	.049	.297	.159	.048	.277	.150	.046	.258	.141	.043	.240	.133	.041	
4.0	.276	.143	.042	.266	.139	.041	.248	.131	.039	.230	.124	.037	.214	.117	.035	
5.0	.250	.127	.037	.241	.124	.036	.224	.117	.034	.209	.110	.033	.194	.104	.031	
6.0	.228	.114	.033	.220	.111	.032	.205	.105	.031	.191	.099	.029	.177	.093	.028	
7.0	.210	.104	.029	.203	.101	.029	.189	.095	.027	.175	.090	.026	.163	.085	.025	
8.0	.194	.095	.027	.188	.092	.026	.175	.087	.025	.163	.082	.024	.151	.078	.023	
9.0	.181	.087	.024	.175	.085	.024	.163	.080	.023	.151	.076	.022	.141	.072	.021	
10.0	.169	.081	.022	.163	.079	.022	.152	.075	.021	.142	.070	.020	.132	.066	.019	

ρcc	80%			70%			50%			30%			10%			0
ρw	50%	30%	10%	50%	30%	10%	50%	30%	10%	50%	30%	10%	50%	30%	10%	0
ρfc	20%			20%			20%			20%			20%			0
RCR	RCR:Room Cavity Ratio						Ceiling Cavity Exitance Coefficients(CCEC)									
0.0	.339	.339	.339	.290	.290	.290	.198	.198	.198	.114	.114	.114	.036	.036	.036	
1.0	.337	.305	.277	.288	.262	.238	.197	.180	.165	.113	.104	.096	.036	.034	.031	
2.0	.331	.282	.242	.283	.243	.209	.194	.168	.146	.112	.098	.086	.036	.032	.028	
3.0	.323	.266	.221	.277	.230	.191	.190	.160	.134	.110	.093	.079	.035	.030	.026	
4.0	.316	.254	.207	.271	.219	.179	.186	.153	.126	.108	.090	.075	.035	.029	.025	
5.0	.308	.244	.197	.265	.211	.171	.182	.148	.121	.106	.087	.072	.034	.028	.024	
6.0	.300	.236	.190	.258	.205	.166	.178	.143	.117	.103	.084	.070	.033	.028	.023	
7.0	.293	.230	.185	.252	.199	.162	.174	.140	.114	.101	.082	.068	.033	.027	.023	
8.0	.286	.224	.182	.247	.195	.158	.171	.137	.112	.099	.081	.067	.032	.026	.022	
9.0	.280	.220	.179	.241	.191	.156	.167	.134	.111	.097	.079	.066	.032	.026	.022	
10.0	.274	.215	.176	.236	.187	.154	.164	.132	.109	.096	.078	.065	.031	.026	.022	

C Range: 0 - 360DEG
 C Interval: 90.0DEG
 Test Speed: HIGH
 Temperature:25.3DEG
 Operators:
 Test Date:2024-10-12

γ Range: 0 - 180DEG
 γ Interval: 1.0DEG
 Test System:EVERFINE GO-2000A_V1 SYSTEM V2.0.285
 Humidity:65.0%
 Test Distance:7.690m [K=1.0000]
 Remarks:

UGR(Unified Glare Rating) Table

Test:U:120.6V I:0.1850A P:10.50W PF:0.4709 Lamp Flux:316.817x1 lm										
NAME: MIX-03-14-2.5M 3000K					TYPE:			WEIGHT:		
SPEC.:					DIM.:			SERIAL No.:		
MFR.:					SUR.:			PROTECTION ANGLE:		
ceiling/cavity	0.7	0.7	0.5	0.5	0.3	0.7	0.7	0.5	0.5	0.3
walls	0.5	0.3	0.5	0.3	0.3	0.5	0.3	0.5	0.3	0.3
working plane	0.2	0.2	0.2	0.2	0.2	0.2	0.2	0.2	0.2	0.2
Room dimensions	Viewed crosswise					Viewed endwise				
x = 2H y = 2H	-2.8	-1.4	-2.3	-0.8	-0.2	5.4	6.8	5.9	7.3	7.9
3H	-1.5	-0.2	-1.0	0.3	1.0	8.4	9.7	8.9	10.2	10.9
4H	-1.0	0.2	-0.4	0.8	1.5	9.9	11.2	10.5	11.7	12.4
6H	-0.5	0.7	0.1	1.3	1.9	11.5	12.7	12.1	13.3	14.0
8H	-0.3	0.8	0.3	1.5	2.2	12.4	13.5	13.0	14.1	14.8
12H	-0.0	1.0	0.6	1.7	2.4	13.3	14.4	13.9	15.0	15.7
4H 2H	0.5	1.7	1.1	2.3	3.0	5.6	6.8	6.1	7.4	8.0
3H	2.1	3.2	2.7	3.8	4.5	8.8	9.9	9.4	10.5	11.2
4H	2.9	3.9	3.5	4.5	5.2	10.6	11.6	11.2	12.2	13.0
6H	3.5	4.4	4.2	5.1	5.9	12.4	13.3	13.1	14.0	14.8
8H	3.8	4.6	4.5	5.3	6.1	13.4	14.3	14.1	14.9	15.7
12H	4.0	4.8	4.7	5.5	6.3	14.5	15.3	15.2	16.0	16.8
8H 4H	5.0	5.9	5.7	6.6	7.3	10.7	11.6	11.4	12.3	13.0
6H	6.1	6.8	6.8	7.6	8.4	12.9	13.6	13.6	14.3	15.1
8H	6.6	7.3	7.4	8.0	8.9	14.0	14.7	14.8	15.4	16.2
12H	7.1	7.7	7.8	8.4	9.3	15.4	15.9	16.1	16.7	17.5
12H 4H	5.7	6.4	6.4	7.1	7.9	10.7	11.5	11.4	12.2	13.0
6H	7.0	7.7	7.8	8.4	9.3	12.9	13.5	13.6	14.3	15.1
8H	7.8	8.3	8.5	9.1	9.9	14.2	14.7	14.9	15.5	16.3
Variations with the observer position at spacings:										
S = 1.0H	+ 0.1 / - 0.1					+ 0.1 / - 0.1				
1.5H	+ 0.2 / - 0.2					+ 0.2 / - 0.2				
2.0H	+ 0.3 / - 0.4					+ 0.3 / - 0.3				

CIE Pub.117 Corrected 316.8 lm Total Lamp Luminous Flux. (8log(F/F0) = -4.0)

C Range: 0 - 360DEG
 C Interval: 90.0DEG
 Test Speed: HIGH
 Temperature: 25.3DEG
 Operators:
 Test Date: 2024-10-12

γ Range: 0 - 180DEG
 γ Interval: 1.0DEG
 Test System: EVERFINE GO-2000A_V1 SYSTEM V2.0.285
 Humidity: 65.0%
 Test Distance: 7.690m [K=1.0000]
 Remarks:

UTILIZATION FACTORS TABLE

Test:U:120.6V I:0.1850A P:10.50W PF:0.4709 Lamp Flux:316.817x1 lm		
NAME: MIX-03-14-2.5M 3000K	TYPE:	WEIGHT:
SPEC.:	DIM.:	SERIAL No.:
MFR.:	SUR.:	PROTECTION ANGLE:

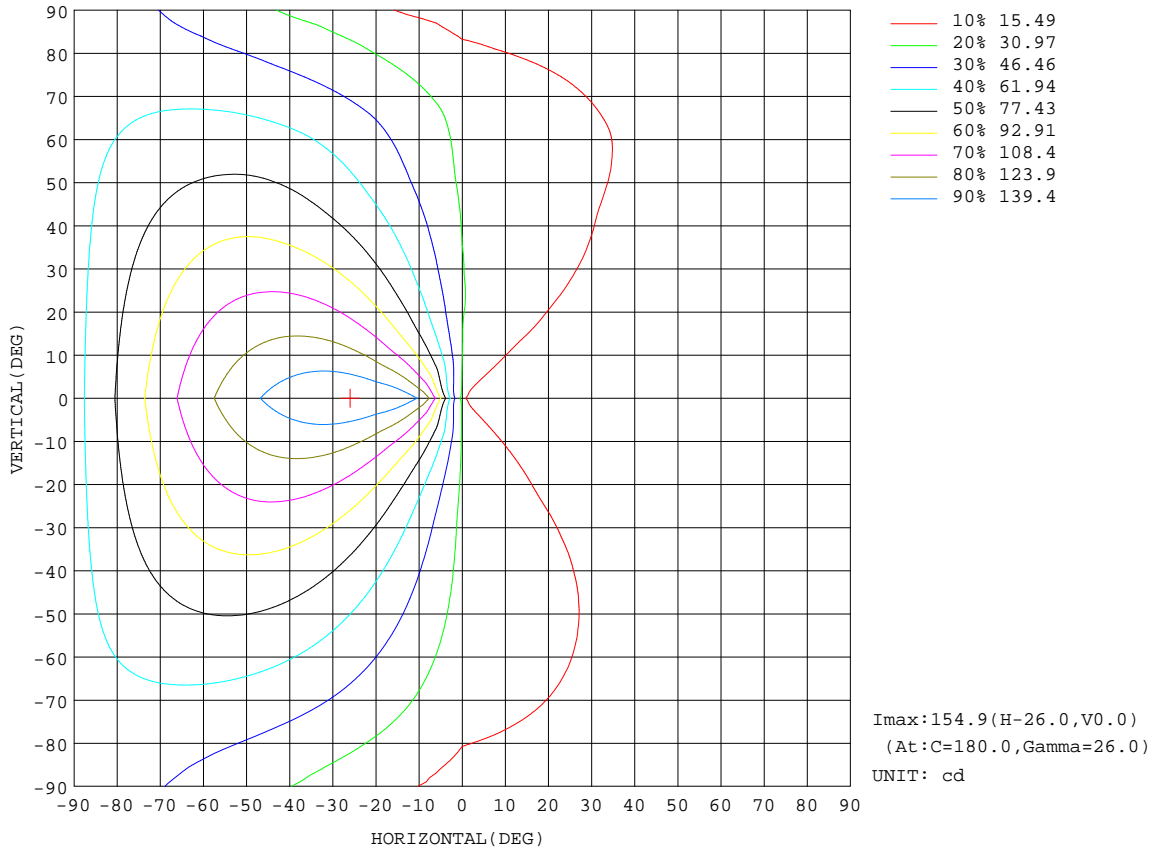
REFLECTANCE										
Ceiling	0.8	0.8	0.8	0.7	0.7	0.7	0.5	0.5	0.5	0
Walls	0.7	0.5	0.3	0.7	0.5	0.3	0.7	0.5	0.3	0
Working plane	0.2	0.2	0.2	0.2	0.2	0.2	0.2	0.2	0.2	0
ROOM INDEX	UTILIZATION FACTORS(PERCENT) $k(RI) \times RCR = 5$									
k = 0.60	45	32	25	44	32	25	42	31	24	17
0.80	54	41	33	53	40	32	50	39	31	23
1.00	62	49	40	60	48	39	56	48	38	29
1.25	69	56	47	67	55	46	62	52	44	34
1.50	74	62	53	72	60	52	66	57	49	38
2.00	82	70	62	79	68	60	73	64	57	45
2.50	87	76	68	83	73	66	77	69	62	49
3.00	91	81	73	87	78	71	80	73	67	53
4.00	96	87	80	91	84	78	84	78	73	58
5.00	99	91	85	94	88	82	87	81	77	61
ROOM INDEX	UF(total)									Direct
According to DIN EN 13032-2 2004			Suspended				SHRNOM = 1.25			

C Range: 0 - 360DEG
 C Interval: 90.0DEG
 Test Speed: HIGH
 Temperature:25.3DEG
 Operators:
 Test Date:2024-10-12

γ Range: 0 - 180DEG
 γ Interval: 1.0DEG
 Test System:EVERFINE GO-2000A_V1 SYSTEM V2.0.285
 Humidity:65.0%
 Test Distance:7.690m [K=1.0000]
 Remarks:

ISOCANDELA DIAGRAM

Test:U:120.6V I:0.1850A P:10.50W PF:0.4709 Lamp Flux:316.817x1 lm		
NAME: MIX-03-14-2.5M 3000K	TYPE:	WEIGHT:
SPEC.:	DIM.:	SERIAL No.:
MFR.:	SUR.:	PROTECTION ANGLE:

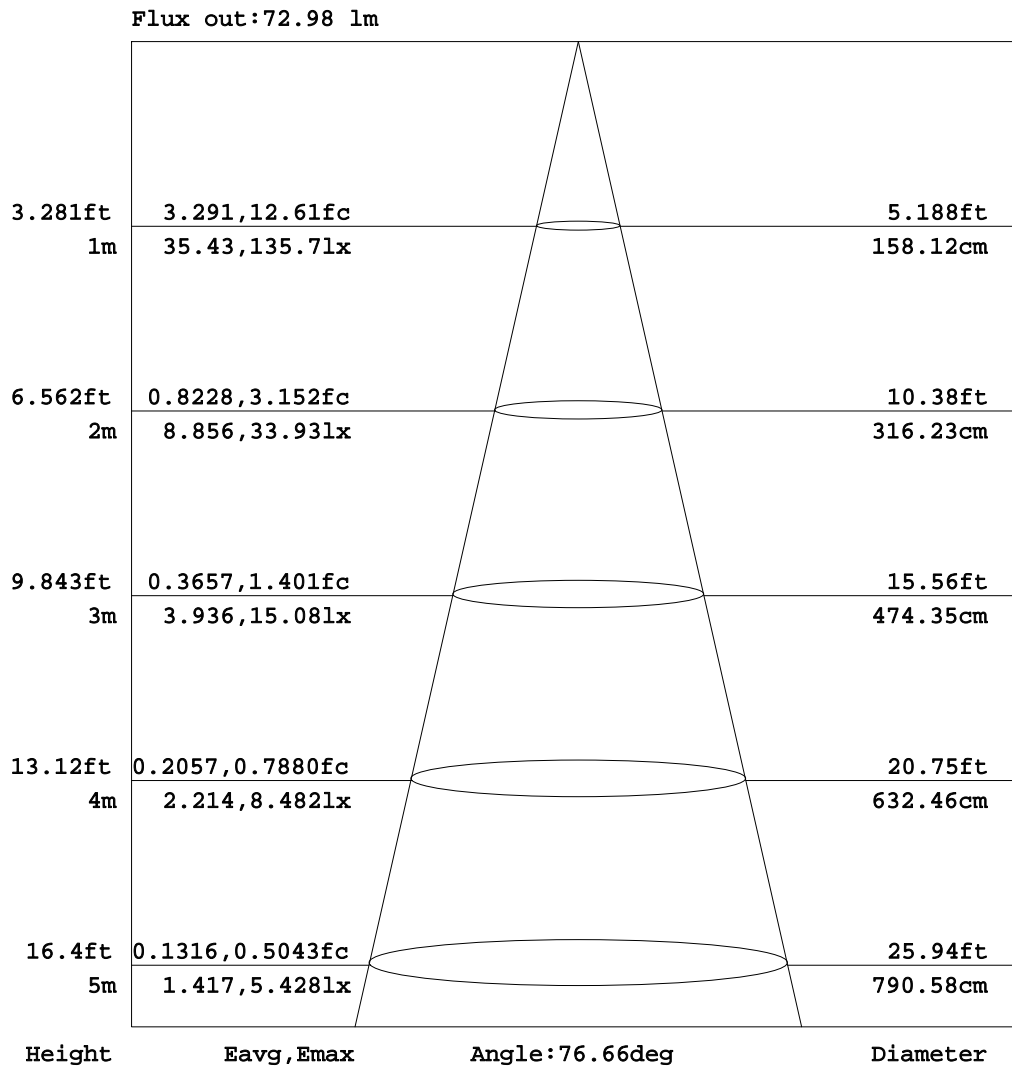


C Range: 0 - 360DEG
 C Interval: 90.0DEG
 Test Speed: HIGH
 Temperature: 25.3DEG
 Operators:
 Test Date: 2024-10-12

γ Range: 0 - 180DEG
 γ Interval: 1.0DEG
 Test System: EVERFINE GO-2000A_V1 SYSTEM V2.0.285
 Humidity: 65.0%
 Test Distance: 7.690m [K=1.0000]
 Remarks:

AAI Figure

Test:U:120.6V I:0.1850A P:10.50W PF:0.4709 Lamp Flux:316.817x1 lm		
NAME: MIX-03-14-2.5M 3000K	TYPE:	WEIGHT:
SPEC.:	DIM.:	SERIAL No.:
MFR.:	SUR.:	PROTECTION ANGLE:



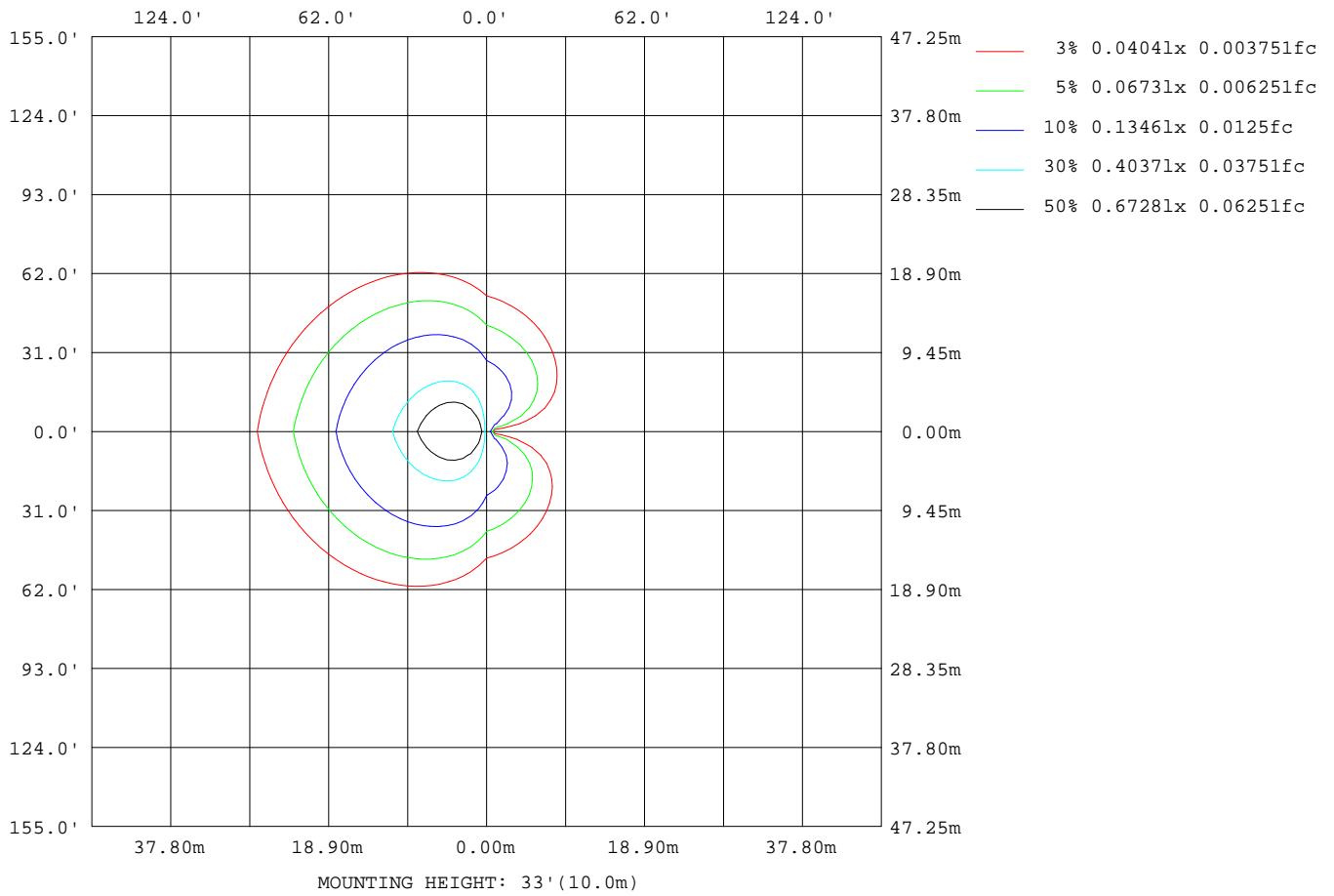
Note:The Curves indicate the illuminated area and the average illumination when the luminaire is at different distance.

C Range: 0 - 360DEG
 C Interval: 90.0DEG
 Test Speed: HIGH
 Temperature:25.3DEG
 Operators:
 Test Date:2024-10-12

γ Range: 0 - 180DEG
 γ Interval: 1.0DEG
 Test System:EVERFINE GO-2000A_V1 SYSTEM V2.0.285
 Humidity:65.0%
 Test Distance:7.690m [K=1.0000]
 Remarks:

ISOLUX DIAGRAM

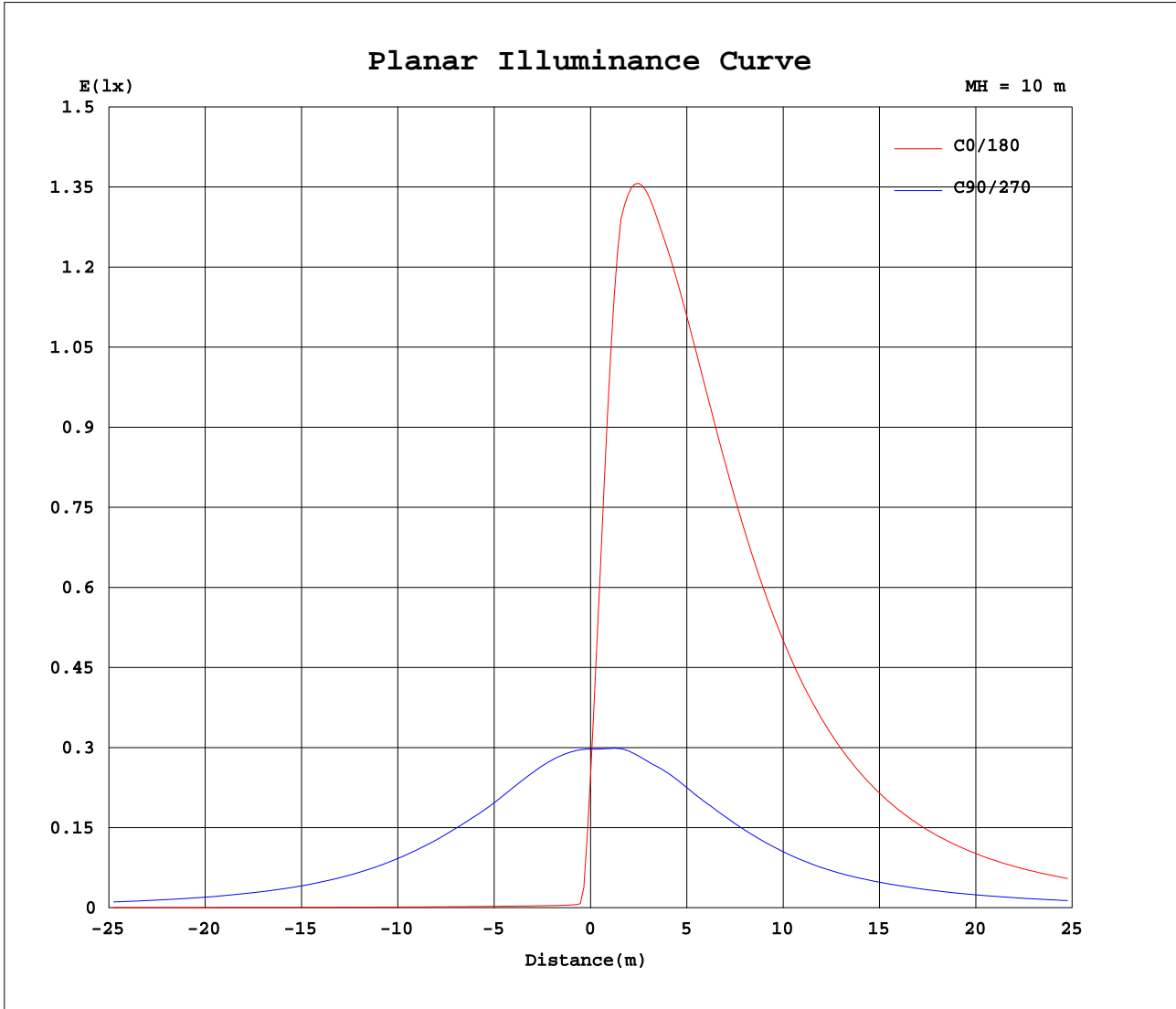
Test:U:120.6V I:0.1850A P:10.50W PF:0.4709 Lamp Flux:316.817x1 lm		
NAME: MIX-03-14-2.5M 3000K	TYPE:	WEIGHT:
SPEC.:	DIM.:	SERIAL No.:
MFR.:	SUR.:	PROTECTION ANGLE:



C Range: 0 - 360DEG
 C Interval: 90.0DEG
 Test Speed: HIGH
 Temperature: 25.3DEG
 Operators:
 Test Date: 2024-10-12

γ Range: 0 - 180DEG
 γ Interval: 1.0DEG
 Test System: EVERFINE GO-2000A_V1 SYSTEM V2.0.285
 Humidity: 65.0%
 Test Distance: 7.690m [K=1.0000]
 Remarks:

Planar Illuminance Curve



C Range: 0 - 360DEG
 C Interval: 90.0DEG
 Test Speed: HIGH
 Temperature: 25.3DEG
 Operators:
 Test Date: 2024-10-12

γ Range: 0 - 180DEG
 γ Interval: 1.0DEG
 Test System: EVERFINE GO-2000A_V1 SYSTEM V2.0.285
 Humidity: 65.0%
 Test Distance: 7.690m [K=1.0000]
 Remarks:

LUMINOUS DISTRIBUTION INTENSITY DATA

Test:U:120.6V I:0.1850A P:10.50W PF:0.4709 Lamp Flux:316.817x1 lm		
NAME: MIX-03-14-2.5M 3000K	TYPE:	WEIGHT:
SPEC.:	DIM.:	SERIAL No.:
MFR.:	SUR.:	PROTECTION ANGLE:

Table--1

UNIT: cd

C(DEG) γ (DEG)	0	90	180	270															
0	24.7	29.7	24.7	29.7															
5	0.58	29.7	93.1	30.2															
10	0.47	29.4	138	31.0															
15	0.43	29.0	150	31.1															
20	0.41	28.4	153	31.4															
25	0.41	27.7	155	31.6															
30	0.41	27.2	154	31.2															
35	0.41	27.1	151	31.0															
40	0.43	26.7	147	30.5															
45	0.45	26.1	142	29.7															
50	0.47	25.4	135	28.8															
55	0.48	24.5	128	28.2															
60	0.52	23.3	120	27.8															
65	0.57	22.0	111	26.9															
70	0.60	20.4	101	24.6															
75	0.63	18.4	89.9	21.3															
80	0.66	15.9	78.6	17.7															
85	0.70	13.1	67.4	13.8															
90	0.75	10.1	57.6	6.56															
95	0.81	3.59	52.4	3.02															
100	0.88	3.93	49.5	3.31															
105	0.95	3.78	46.2	3.04															
110	1.00	2.67	42.5	2.89															
115	1.03	1.56	38.8	2.72															
120	1.05	1.29	35.1	2.46															
125	1.06	1.07	31.4	2.40															
130	1.03	1.00	27.8	2.28															
135	1.00	0.94	24.4	2.05															
140	1.01	0.88	21.2	1.63															
145	1.04	0.83	18.2	1.29															
150	1.00	0.76	15.6	1.08															
155	0.94	0.73	13.2	0.93															
160	0.85	0.70	10.8	0.81															
165	0.73	0.66	7.92	0.71															
170	0.72	0.63	4.30	0.64															
175	0.62	0.60	0.87	0.61															
180	0.58	0.58	0.57	0.59															

C Range: 0 - 360DEG
 C Interval: 90.0DEG
 Test Speed: HIGH
 Temperature:25.3DEG
 Operators:
 Test Date:2024-10-12

γ Range: 0 - 180DEG
 γ Interval: 1.0DEG
 Test System:EVERFINE GO-2000A_V1 SYSTEM V2.0.285
 Humidity:65.0%
 Test Distance:7.690m [K=1.0000]
 Remarks: