

RGB High Power Indoor

This high-power RGB tape light is designed to deliver vibrant and customizable color effects with superior brightness. Utilizing high-density 2835 LEDs, it offers dynamic lighting for various indoor environments. With a power consumption of 14.4W/m and a wide beam angle of 120°, this strip light is perfect for creating striking and colorful lighting scenes.



FEATURES

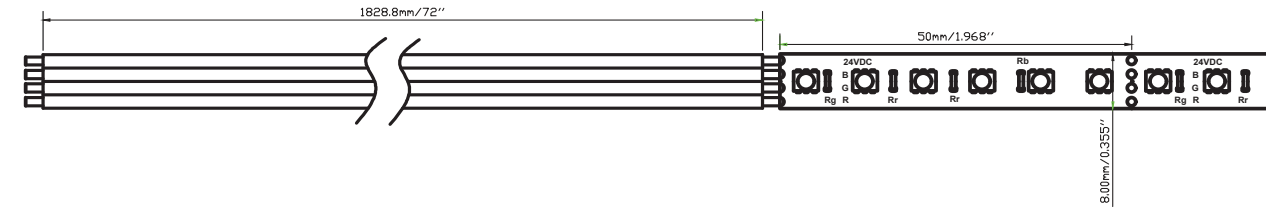
- Customizable RGB lighting for dynamic color effects.
- 14.4W/m for bright and vivid illumination.
- 36 lumens per watt for rich color saturation.
- 120 LEDs per meter for even light distribution.
- 30Z copper PCB for enhanced durability and heat management.
- 120° beam angle for wide and uniform light coverage.
- IP20 rating for indoor use, protecting against dust.
- 50mm cutting intervals for precise customization.
- 5-year warranty for long-term reliability.

APPLICATIONS

- Architectural
- Entertainment
- Retail
- Commercial

SPECIFICATIONS

Product Code		<ul style="list-style-type: none"> • ST-ID-RGB-HP-XX-B8 [XX: Length in feet; B: 2835 LED; O: 10mm PCB] • Available in 20 feet: ST-ID-RGB-HP-20-B8
Electrical	Input Voltage	24V DC
	Power Consumption	4.39W/ft (14.4W/m)
	Efficacy	36Lm/w
Specs	Color Temperature	RGB
	Lumen Output	158Lm/ft (518Lm/m)
	Beam Angle	120°
LED	Chip Type	2835
	# per meter	120
Design	Dimensions (Inches)	.31" W
	Dimensions (Millimeters)	8mm W
	Max Length	20Ft (6M)
	Custom Cuttable	1.97" (50mm)
	IP Rating	IP20
	Approved Location	Indoor
Warranty	5 Years	
Approvals	cULus	



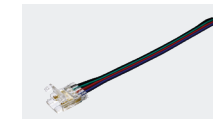
ACCESSORIES



ST-ID-RGB-BWBC-6
6" Jumper



ST-ID-RGB-B2BC
Splice



ST-ID-RGB-W2BC-72
6' power feed

DRIVERS

Non-Dimmable



LEDDR-24-120W
Indoor/Outdoor driver
Max. recommended load:
90W;
10" x 3 3/8" x 3 3/16" (254 x 85.7 x 80.9mm)



**PGID2448/
PGID2496**
Plug-in Driver

CONTROLLERS



CNTRL-AMP
5-Channel
High Performance
Amplifier



CNTRL-8Z-RGBCCT-WP
8 Zone RGB+CCT
Wall Panel Remote



CNTRL-RGBCCT
3 in 1 LED Strip Controller



CNTRL-4Z-RGBCCT-RM
4-Zone RGB+CCT Remote